

Datasheet for ABIN519930

anti-Retinoid X Receptor alpha antibody (AA 1-462)[Go to Product page](#)**2** Images

Overview

Quantity:	100 µg
Target:	Retinoid X Receptor alpha (RXRA)
Binding Specificity:	AA 1-462
Reactivity:	Human
Host:	Rabbit
Clonality:	Polyclonal
Conjugate:	This Retinoid X Receptor alpha antibody is un-conjugated
Application:	Western Blotting (WB), Proximity Ligation Assay (PLA)

Product Details

Purpose:	Rabbit polyclonal antibody raised against a full-length human RXRA protein.
Immunogen:	RXRA (NP_002948.1, 1 a.a. ~ 462 a.a) full-length human protein.
Sequence:	MDTKHFLPLD FSTQVNSSLT SPTGRGSMAA PSLHPSLGPG IGSPGQLHSP ISTLSSPING MGPPFSVISS PMGPHSMSVP TTPTLGFSTG SPQLSSPMNP VSSSEDIKPP LGLNGVLKVP AHPSGNMAF TKHICAICGD RSSGKHVGVY SCEGCKGFFK RTVRKDLTYT CRDNKDCLID KRQRNRCQYC RYQKCLAMGM KREAVQEERQ RGKDRNENEV ESTSSANEDM PVERILEAEL AVEPKTETYV EANMGLNPSS PNDPVTNICQ AADKQLFTLV EWAKRIPHFS ELPLDDQVIL LRAGWNELLI ASFSHRSAIV KDGILLATGL HVHRNSAHS A VGGAIFDRVL TELVSKMRDM QMDKTELGCL RAIVLFPDS KGLSNPAEVE ALREKVYASL EAYCKHKYPE QPGRFAKLLL RLPALRSIGL KCLEHLFFFK LIGDTPIDTF LMEMLEAPHQ MT
Cross-Reactivity:	Human

Product Details

Characteristics: Antibody reactive against mammalian transfected lysate.

Target Details

Target: Retinoid X Receptor alpha (RXRA)

Alternative Name: RXRA ([RXRA Products](#))

Background: Full Gene Name: retinoid X receptor, alpha
Synonyms: FLJ00280,FLJ00318,FLJ16020,FLJ16733,MGC102720,NR2B1

Gene ID: 6256

NCBI Accession: [NM_002957](#)

Pathways: [Nuclear Receptor Transcription Pathway](#), [Retinoic Acid Receptor Signaling Pathway](#), [Steroid Hormone Mediated Signaling Pathway](#), [Regulation of Lipid Metabolism by PPARalpha](#), [Hepatitis C](#)

Application Details

Application Notes: Optimal working dilution should be determined by the investigator.

Restrictions: For Research Use only

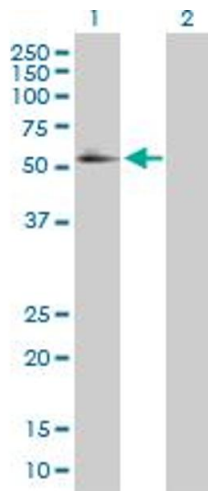
Handling

Buffer: In 1x PBS, pH 7.4

Handling Advice: Aliquot to avoid repeated freezing and thawing.

Storage: -20 °C

Storage Comment: Store at -20°C or lower. Aliquot to avoid repeated freezing and thawing.

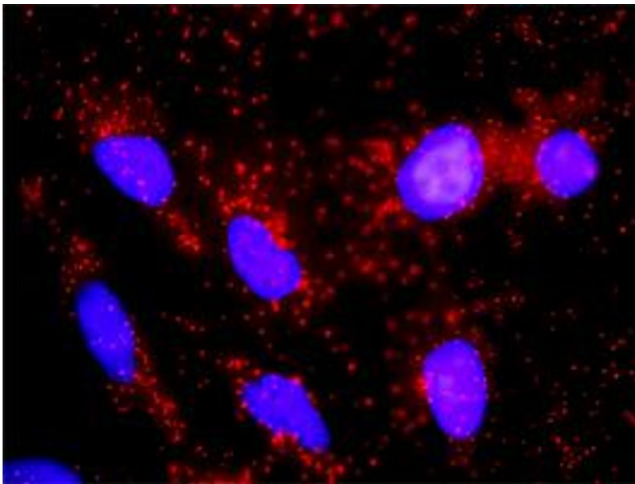


Western Blotting

Image 1. Western Blot analysis of RXRA expression in transfected 293T cell line by RXRA MaxPab polyclonal antibody.

Lane 1: RXRA transfected lysate(50.80 KDa).

Lane 2: Non-transfected lysate.



Proximity Ligation Assay

Image 2. Proximity Ligation Analysis of protein-protein interactions between RXRA and CTNNB1. HeLa cells were stained with anti-RXRA rabbit purified polyclonal 1:1200 and anti-CTNNB1 mouse monoclonal antibody 1:50. Each red dot represents the detection of protein-protein interaction complex, and nuclei were counterstained with DAPI (blue).