

Datasheet for ABIN519957
anti-S100A7 antibody (AA 1-101)

4 Images

[Go to Product page](#)

Overview

Quantity:	50 µg
Target:	S100A7
Binding Specificity:	AA 1-101
Reactivity:	Human
Host:	Mouse
Clonality:	Monoclonal
Conjugate:	This S100A7 antibody is un-conjugated
Application:	Western Blotting (WB), ELISA, Immunofluorescence (IF)

Product Details

Purpose:	Mouse monoclonal antibody raised against a full-length recombinant S100A7.
Immunogen:	S100A7 (AAH34687.1, 1 a.a. ~ 101 a.a) full-length recombinant protein with GST tag. MW of the GST tag alone is 26 KDa.
Sequence:	MSNTQAERSI IGMIDMFHKY TRRDDKIDKP SLLTMMKENF PNFLSACDKK GTNYLADVFE KKDKNEDKKI DFSEFLSLLG DIATDYHKQS HGAAPCSGGS Q
Clone:	3E11
Isotype:	IgG2b
Cross-Reactivity:	Human
Characteristics:	Antibody Reactive Against Recombinant Protein.

Target Details

Target:	S100A7
Alternative Name:	S100A7 (S100A7 Products)
Background:	Full Gene Name: S100 calcium binding protein A7 Synonyms: PSOR1,S100A7c
Gene ID:	6278
Pathways:	S100 Proteins

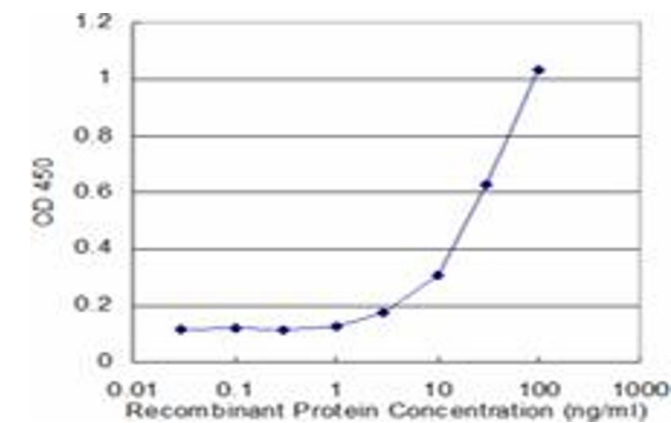
Application Details

Application Notes:	Optimal working dilution should be determined by the investigator.
Restrictions:	For Research Use only

Handling

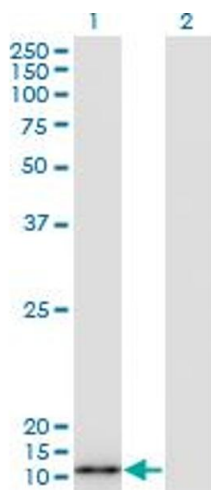
Buffer:	In 1x PBS, pH 7.4
Handling Advice:	Aliquot to avoid repeated freezing and thawing.
Storage:	-20 °C
Storage Comment:	Store at -20°C or lower. Aliquot to avoid repeated freezing and thawing.

Images



ELISA

Image 1. Detection limit for recombinant GST tagged S100A7 is approximately 3ng/ml as a capture antibody.

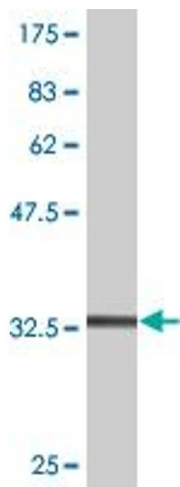


Western Blotting

Image 2. Western Blot analysis of S100A7 expression in transfected 293T cell line by S100A7 monoclonal antibody (M07), clone 3E11.

Lane 1: S100A7 transfected lysate(11.5 kDa).

Lane 2: Non-transfected lysate.



Western Blotting

Image 3. Western Blot detection against Immunogen (36.85 kDa) .

Please check the [product details page](#) for more images. Overall 4 images are available for ABIN519957.