



Datasheet for ABIN519961  
**anti-S100A8 antibody (AA 1-93)**



[Go to Product page](#)

2 Images

Overview

Quantity:	50 µL
Target:	S100A8
Binding Specificity:	AA 1-93
Reactivity:	Human
Host:	Mouse
Clonality:	Polyclonal
Conjugate:	This S100A8 antibody is un-conjugated
Application:	Western Blotting (WB)

Product Details

Purpose:	Mouse polyclonal antibody raised against a full-length human S100A8 protein.
Immunogen:	S100A8 (AAH05928, 1 a.a. ~ 93 a.a) full-length human protein.
Sequence:	MLTELEKALN SIIDVYHKYS LIKGNFHAVY RDDLKLLLET ECPQYIRKKG ADVWFKELDI NTDGAVNFQE FLILVIKMGV AAHKKSHEES HKE
Cross-Reactivity:	Human
Characteristics:	Antibody reactive against mammalian transfected lysate.

Target Details

Target:	S100A8
Alternative Name:	S100A8 ( <a href="#">S100A8 Products</a> )

## Target Details

Background:	Full Gene Name: S100 calcium binding protein A8 Synonyms: 60B8AG,CAGA,CFAG,CGLA,CP-10,L1Ag,MA387,MIF,MRP8,NIF,P8
Gene ID:	6279
Pathways:	<a href="#">Transition Metal Ion Homeostasis</a> , <a href="#">Positive Regulation of Endopeptidase Activity</a> , <a href="#">S100 Proteins</a>

## Application Details

Application Notes:	Optimal working dilution should be determined by the investigator.
Restrictions:	For Research Use only

## Handling

Format:	Liquid
Buffer:	No additive
Preservative:	Without preservative
Handling Advice:	Aliquot to avoid repeated freezing and thawing.
Storage:	-20 °C
Storage Comment:	Store at -20°C or lower. Aliquot to avoid repeated freezing and thawing.

## Images

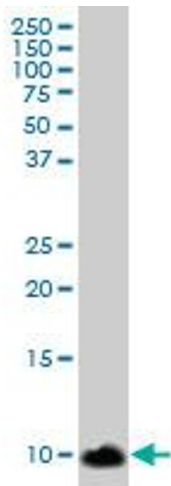


### Western Blotting

**Image 1.** Western Blot analysis of S100A8 expression in transfected 293T cell line by S100A8 MaxPab polyclonal antibody.

Lane 1: S100A8 transfected lysate (10.34 kDa).

Lane 2: Non-transfected lysate.



### Western Blotting

**Image 2.** S100A8 MaxPab polyclonal antibody. Western Blot analysis of S100A8 expression in human lung cancer.