

Datasheet for ABIN519969
anti-S100A10 antibody (AA 1-97)[Go to Product page](#)

3 Images

Overview

Quantity:	50 µL
Target:	S100A10
Binding Specificity:	AA 1-97
Reactivity:	Human
Host:	Mouse
Clonality:	Polyclonal
Conjugate:	This S100A10 antibody is un-conjugated
Application:	Western Blotting (WB), Immunofluorescence (IF)

Product Details

Purpose:	Mouse polyclonal antibody raised against a full-length human S100A10 protein.
Immunogen:	S100A10 (AAH15973, 1 a.a. ~ 97 a.a) full-length human protein.
Sequence:	MPSQMEHAME TMMFTFHKFA GDKGYLTKEG LRVLMEKEFP GFLENQKDPL AVDKIMKDLD QCRDGGKVGFG SFFSLIAGLT IACNDYFVVH MKQKGKK
Cross-Reactivity:	Human
Characteristics:	Antibody reactive against mammalian transfected lysate.

Target Details

Target:	S100A10
Alternative Name:	S100A10 (S100A10 Products)

Target Details

Background:	Full Gene Name: S100 calcium binding protein A10 Synonyms: 42C,ANX2L,ANX2LG,CAL1L,CLP11,Ca[1],GP11,MGC111133,P11,p10
Gene ID:	6281
Pathways:	S100 Proteins

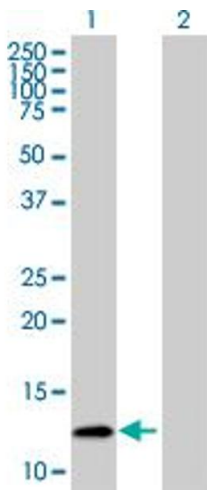
Application Details

Application Notes:	Optimal working dilution should be determined by the investigator.
Restrictions:	For Research Use only

Handling

Format:	Liquid
Buffer:	No additive
Preservative:	Without preservative
Handling Advice:	Aliquot to avoid repeated freezing and thawing.
Storage:	-20 °C
Storage Comment:	Store at -20°C or lower. Aliquot to avoid repeated freezing and thawing.

Images

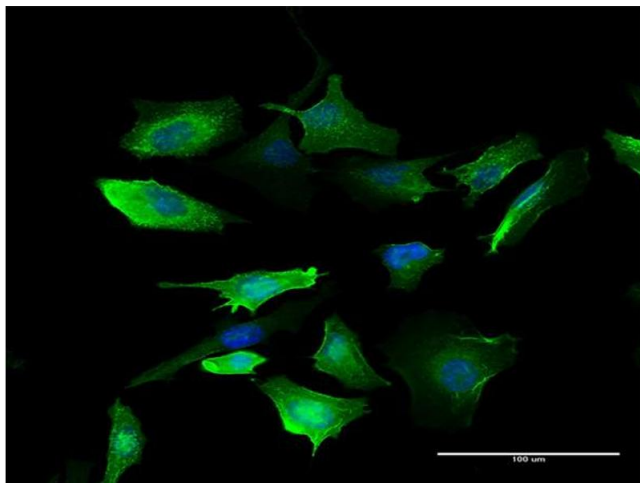


Western Blotting

Image 1. Western Blot analysis of S100A10 expression in transfected 293T cell line by S100A10 MaxPab polyclonal antibody.

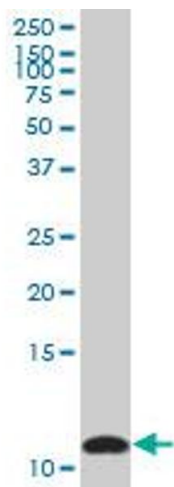
Lane1:S100A10 transfected lysate(10.78 KDa).

Lane 2:Non-transfected lysate.



Immunofluorescence

Image 2. Immunofluorescence of purified MaxPab antibody to S100A10 on HeLa cell. [antibody concentration 10 ug/ml]



Western Blotting

Image 3. S100A10 MaxPab polyclonal antibody. Western Blot analysis of S100A10 expression in human lung cancer.