

Datasheet for ABIN519976

S100A13 (Human) Matched Antibody Pair



[Go to Product page](#)

1 Image

Overview

Quantity: 1 set

Target: S100A13

Reactivity: Human

Host: Rabbit, Mouse

Application: ELISA

Product Details

Purpose: This antibody pair set comes with matched antibody pair to detect and quantify protein level of human S100A13.

Cross-Reactivity: Human

Characteristics: This antibody pair set comes with matched antibody pair to detect and quantify protein level of human S100A13.

Components: Antibody pair set content:
1. Capture antibody: rabbit affinity purified polyclonal anti-S100A13 (100 µg)
2. Detection antibody: mouse polyclonal anti-S100A13 (40 µL)
*Reagents are sufficient for at least 3-5 x 96 well plates using recommended protocols.

Target Details

Target: S100A13

Alternative Name: S100A13 ([S100A13 Products](#))

Background: Full Gene Name: S100 calcium binding protein A13

Target Details

Synonyms:

Gene ID: 6284

Application Details

Application Notes: Optimal working dilution should be determined by the investigator.

Restrictions: For Research Use only

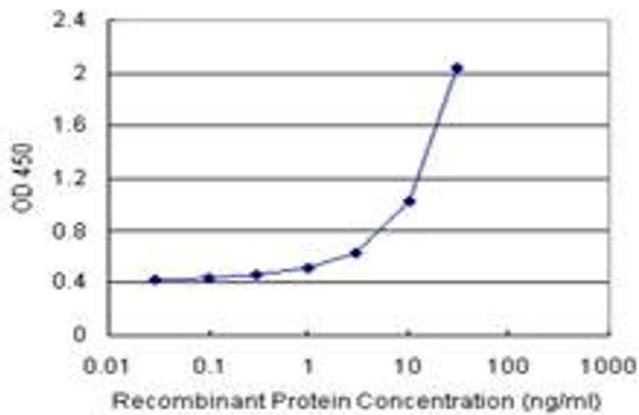
Handling

Handling Advice: Please aliquot to avoid repeated freeze thaw cycle.

Storage: -20 °C

Storage Comment: Store reagents of the antibody pair set at -20°C or lower. Please aliquot to avoid repeated freeze thaw cycle. Reagents should be returned to -20°C storage immediately after use.

Images



ELISA

Image 1. Sandwich ELISA detection sensitivity ranging from 0.3 ng/mL to 100 ng/mL.