

Datasheet for ABIN519978  
**anti-S100A13 antibody (AA 1-98)**[Go to Product page](#)

## 2 Images

## Overview

Quantity:	100 µg
Target:	S100A13
Binding Specificity:	AA 1-98
Reactivity:	Human
Host:	Rabbit
Clonality:	Polyclonal
Conjugate:	This S100A13 antibody is un-conjugated
Application:	Western Blotting (WB)

## Product Details

Purpose:	Rabbit polyclonal antibody raised against a full-length human S100A13 protein.
Immunogen:	S100A13 (NP_001019381.1, 1 a.a. ~ 98 a.a) full-length human protein.
Sequence:	MAAEPLTELE ESIETVVTTF FTFARQEGRK DSLSVNEFKE LVTQQLPHLL KDVGSLDEKM KSLDVNQDSE LKFNEYWRLI GELAKEIRKK KDLKIRKK
Cross-Reactivity:	Human
Characteristics:	Antibody reactive against mammalian transfected lysate.

## Target Details

Target:	S100A13
Alternative Name:	S100A13 ( <a href="#">S100A13 Products</a> )

### Target Details

Background:	Full Gene Name: S100 calcium binding protein A13 Synonyms:
Gene ID:	6284
NCBI Accession:	<a href="#">NM_001024210</a>
Pathways:	<a href="#">S100 Proteins</a>

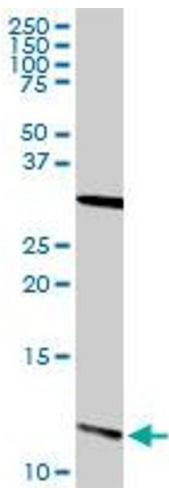
### Application Details

Application Notes:	Optimal working dilution should be determined by the investigator.
Restrictions:	For Research Use only

### Handling

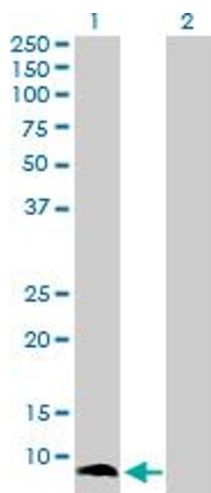
Buffer:	In 1x PBS, pH 7.4
Handling Advice:	Aliquot to avoid repeated freezing and thawing.
Storage:	-20 °C
Storage Comment:	Store at -20°C or lower. Aliquot to avoid repeated freezing and thawing.

### Images



**Western Blotting**

**Image 1.** S100A13 MaxPab rabbit polyclonal antibody. Western Blot analysis of S100A13 expression in human kidney.



Western Blotting

**Image 2.** Western Blot analysis of S100A13 expression in transfected 293T cell line by S100A13 MaxPab polyclonal antibody.

Lane 1: S100A13 transfected lysate(11.50 KDa).

Lane 2: Non-transfected lysate.