



[Go to Product page](#)

Datasheet for ABIN520025

anti-SCNN1B antibody (AA 1-640)

1 Image

Overview

Quantity:	50 µg
Target:	SCNN1B
Binding Specificity:	AA 1-640
Reactivity:	Human
Host:	Mouse
Clonality:	Polyclonal
Conjugate:	This SCNN1B antibody is un-conjugated
Application:	Western Blotting (WB)

Product Details

Purpose:	Mouse polyclonal antibody raised against a full-length human SCNN1B protein.
Immunogen:	SCNN1B (AAH36352.2, 1 a.a. ~ 640 a.a) full-length human protein.
Sequence:	MHVKKYLLKG LHRLQKGPY TYKELLVWYC DNTNTHGPKR TICEGPKKKA MWFLLLLLFA ALVCWQWGIF IRTYLSWEVS VLSVGFKTM DFPVAVTICNA SPFKYSKIKH LLKDLDELME AVLERILAPE LSHANATRNL NFSIWNHTPL VLIDERNPHH PMVLDLFGDN HNGLTSSAS EKICNAHGCK MAMRLCSLNR TQCTFRNFTS ATQALTEWYI LQATNIFAQV PQQELVEMSY PGEQMILACL FGAEPCNYRN FTSIFYPHYG NCYIFNWGMT EKALPSANPG TEFGLKLILD IGQEDYVPFL ASTAGVRLML HEQRSYPFIR DEGIYAMSGT ETSIGVLVDK LQRMGEPYSP CTVNGSEVPV QNFYSDYNTT YSIQAQLRSC FQDHMIRNCN CGHYLYPLPR GEKYCNNRDF PDWAHCYSDL QMSVAQRETC IGMCKESCND TQYKMTISMA DWPSEASEDW IFHVLSQERD QSTNITLSRK GIVKLNIFQ EFNRYRTIEES AANNIVWLLS NLGGQFGFWM GGSVLCLIEF GEIIDFVWI TIIKLVALAK SLRQRRQAAS YAGPPPTVAE LVEAHTNFGF QPDTAPRSPN

Product Details

TGPYPSEQAL PIPGTPPPNY DSLRLQPLDV IESDSEGDAL

Cross-Reactivity: Human

Characteristics: Antibody reactive against mammalian transfected lysate.

Target Details

Target: SCNN1B

Alternative Name: SCNN1B ([SCNN1B Products](#))

Background: Full Gene Name: sodium channel, nonvoltage-gated 1, beta
Synonyms: ENaCb,ENaCbeta,SCNEB

Gene ID: 6338

Application Details

Application Notes: Optimal working dilution should be determined by the investigator.

Restrictions: For Research Use only

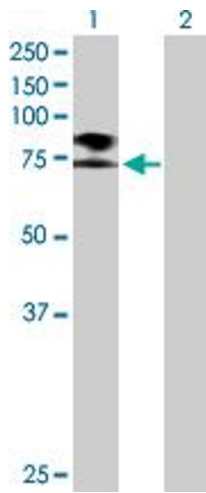
Handling

Buffer: In 1x PBS, pH 7.4

Handling Advice: Aliquot to avoid repeated freezing and thawing.

Storage: -20 °C

Storage Comment: Store at -20°C or lower. Aliquot to avoid repeated freezing and thawing.



Western Blotting

Image 1. Western Blot analysis of SCNN1B expression in transfected 293T cell line by SCNN1B MaxPab polyclonal antibody.

Lane 1: SCNN1B transfected lysate(72.60 KDa).

Lane 2: Non-transfected lysate.