



[Go to Product page](#)

Datasheet for ABIN520028

anti-SCNN1G antibody (AA 1-649)

1 Image

Overview

Quantity:	100 µg
Target:	SCNN1G
Binding Specificity:	AA 1-649
Reactivity:	Human
Host:	Rabbit
Clonality:	Polyclonal
Conjugate:	This SCNN1G antibody is un-conjugated
Application:	Western Blotting (WB)

Product Details

Purpose:	Rabbit polyclonal antibody raised against a full-length human SCNN1G protein.
Immunogen:	SCNN1G (NP_001030.2, 1 a.a. ~ 649 a.a) full-length human protein.
Sequence:	MAPGEKIKAK IKKNLPVTGP QAPTIKELMR WYCLNTNTHG CRRIVSRGR LRLLWIGFT LTAVALILWQ CALLVFSFYT VSVSIKVHFR KLDFPAVTIC NINPYKYSTV RHLLADLEQE TREALKSLYG FPESRKRREA ESWNSVSEGG QPRFSHRIPL LIFDQDEKGG ARDFFTGRKR KVGGSIIHKA SNVMHIESKQ VVGFQLCSND TSDCATYTFS SGINAIQEWY KLHYMNIMAQ VPLEKKINMS YSAEELLVTC FFDGVSCDAR NFTLFHHPMH GNCYTFNNRE NETILSTSMG GSEYGLQVIL YINEEYNPFLVSSTGAKVI IHRQDEYPFV EDVGTEIETA MVTSGMHLT ESFKLSEPYQCTEDGSDVP IRNIYNAAYS LQICLHSCFQ TKMVEKCGCA QYSQPLPPAA NYCNYQQHPN WMYCYYQLHR AFVQEELGCQ SVCKEACSFK EWTLTSLAQ WPSVSEKWL LPVLTWDQGR QVNKLNKTD LAKLLIFYKD LNQRSIMESP ANSIEMLLSN FGGQLGLWMS CSVVVCVIEI EVFFIDFFSI IARRQWQKAK EWWAWKQAPP CPEAPRSPQG QDNPALDIDD

Product Details

DLPTFNSALH LPPALGTQVP GTPPPKYNTL RLERAFSNQL TDTQMLDEL

Cross-Reactivity: Human

Characteristics: Antibody reactive against mammalian transfected lysate.

Target Details

Target: SCNN1G

Alternative Name: SCNN1G ([SCNN1G Products](#))

Background: Full Gene Name: sodium channel, nonvoltage-gated 1, gamma
Synonyms: ENaCg,ENaCgamma,PHA1,SCNEG

Gene ID: 6340

NCBI Accession: [NM_001039](#)

Application Details

Application Notes: Optimal working dilution should be determined by the investigator.

Restrictions: For Research Use only

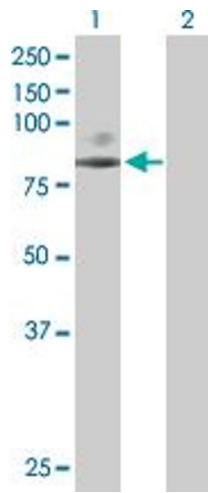
Handling

Buffer: In 1x PBS, pH 7.4

Handling Advice: Aliquot to avoid repeated freezing and thawing.

Storage: -20 °C

Storage Comment: Store at -20°C or lower. Aliquot to avoid repeated freezing and thawing.



Western Blotting

Image 1. Western Blot analysis of SCNN1G expression in transfected 293T cell line by SCNN1G MaxPab polyclonal antibody.

Lane 1: SCNN1G transfected lysate(74.30 KDa).

Lane 2: Non-transfected lysate.