



[Go to Product page](#)

Datasheet for ABIN520038
anti-CCL1 antibody (AA 1-96)

2 Images

1 Publication

Overview

Quantity:	100 µg
Target:	CCL1
Binding Specificity:	AA 1-96
Reactivity:	Human
Host:	Rabbit
Clonality:	Polyclonal
Conjugate:	This CCL1 antibody is un-conjugated
Application:	Western Blotting (WB)

Product Details

Purpose:	Rabbit polyclonal antibody raised against a full-length human CCL1 protein.
Immunogen:	CCL1 (NP_002972.1, 1 a.a. ~ 96 a.a) full-length human protein.
Sequence:	MQIITTALVC LLLAGMWPED VDSKSMQVPF SRCCFSFAEQ EIPLRAILCY RNTSSICSNE GLIFKLRGK EACALDTVGW VQRHRKMLRH CPSKRK
Cross-Reactivity:	Human
Characteristics:	Antibody reactive against mammalian transfected lysate.

Target Details

Target:	CCL1
Alternative Name:	CCL1 (CCL1 Products)

Target Details

Background: Full Gene Name: chemokine (C-C motif) ligand 1
Synonyms: I-309,P500,SCYA1,SISe,TCA3

Gene ID: 6346

NCBI Accession: [NM_002981](#)

Application Details

Application Notes: Optimal working dilution should be determined by the investigator.

Restrictions: For Research Use only

Handling

Buffer: In 1x PBS, pH 7.4

Handling Advice: Aliquot to avoid repeated freezing and thawing.

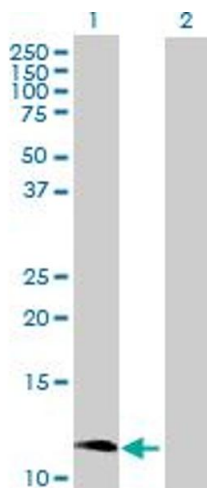
Storage: -20 °C

Storage Comment: Store at -20°C or lower. Aliquot to avoid repeated freezing and thawing.

Publications

Product cited in: Reipschläger, Kubatzky, Taromi, Burger, Orth, Aktories, Schmidt: "Toxin-induced RhoA activity mediates CCL1-triggered signal transducers and activators of transcription protein signaling." in: **The Journal of biological chemistry**, Vol. 287, Issue 14, pp. 11183-94, (2012) ([PubMed](#)).

Images

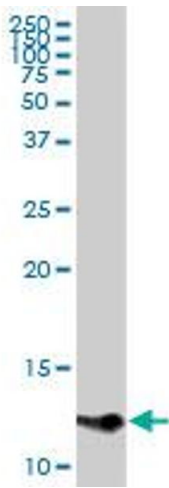


Western Blotting

Image 1. Western Blot analysis of CCL1 expression in transfected 293T cell line by CCL1 MaxPab polyclonal antibody.

Lane 1: CCL1 transfected lysate(11.00 kDa).

Lane 2: Non-transfected lysate.



Western Blotting

Image 2. CCL1 MaxPab rabbit polyclonal antibody. Western Blot analysis of CCL1 expression in A-431.