



[Go to Product page](#)

Datasheet for ABIN520044

anti-CCL3 antibody (AA 24-92)

3 Images

1 Publication

Overview

| | |
|----------------------|-------------------------------------|
| Quantity: | 100 µg |
| Target: | CCL3 |
| Binding Specificity: | AA 24-92 |
| Reactivity: | Human |
| Host: | Mouse |
| Clonality: | Monoclonal |
| Conjugate: | This CCL3 antibody is un-conjugated |
| Application: | Western Blotting (WB), ELISA |

Product Details

| | |
|-------------------|---|
| Purpose: | Mouse monoclonal antibody raised against a partial recombinant CCL3. |
| Immunogen: | CCL3 (NP_002974, 24 a.a. ~ 92 a.a) partial recombinant protein with GST tag. MW of the GST tag alone is 26 KDa. |
| Sequence: | SLAADTPTAC CFSYTSRQIP QNFIADYFET SSQCSPGVI FLTKRSRQVC ADPSEEWWQK YVSDLELSA |
| Clone: | 4E7 |
| Isotype: | IgG2a |
| Cross-Reactivity: | Human |
| Characteristics: | Antibody Reactive Against Recombinant Protein. |

Target Details

Target: CCL3

Alternative Name: CCL3 ([CCL3 Products](#))

Background: Full Gene Name: chemokine (C-C motif) ligand 3
Synonyms: G0S19-1,LD78ALPHA,MIP-1-alpha,MIP1A,SCYA3

Gene ID: 6348

NCBI Accession: [NM_002983](#)

Pathways: [Cellular Response to Molecule of Bacterial Origin, Autophagy](#)

Application Details

Application Notes: Optimal working dilution should be determined by the investigator.

Restrictions: For Research Use only

Handling

Buffer: In 1x PBS, pH 7.4

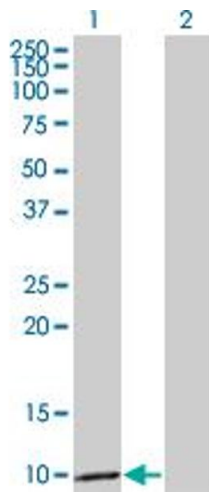
Handling Advice: Aliquot to avoid repeated freezing and thawing.

Storage: -20 °C

Storage Comment: Store at -20°C or lower. Aliquot to avoid repeated freezing and thawing.

Publications

Product cited in: Quek, Ho, Loprieno, Ellis, Elliott, Liu: "A multiplex assay to measure RNA transcripts of prostate cancer in urine." in: **PLoS ONE**, Vol. 7, Issue 9, pp. e45656, (2012) ([PubMed](#)).

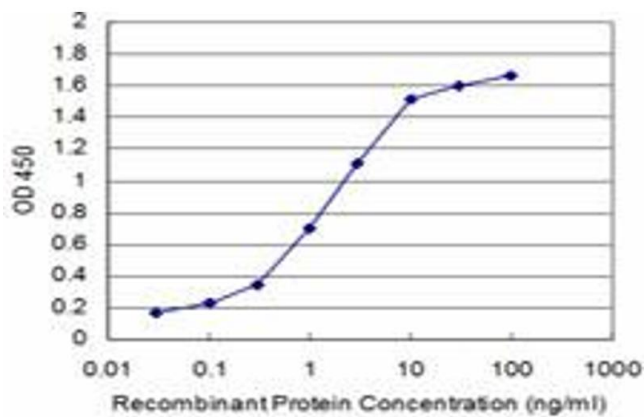


Western Blotting

Image 1. Western Blot analysis of CCL3 expression in transfected 293T cell line by CCL3 monoclonal antibody (M01), clone 4E7.

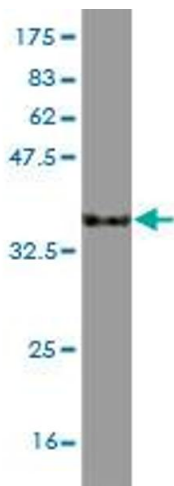
Lane 1: CCL3 transfected lysate(10.1 kDa).

Lane 2: Non-transfected lysate.



ELISA

Image 2. Detection limit for recombinant GST tagged CCL3 is approximately 0.1 ng/ml as a capture antibody.



Western Blotting

Image 3. Western Blot detection against Immunogen (33.33 kDa).