



[Go to Product page](#)

Datasheet for ABIN520045
anti-CCL4 antibody (AA 1-92)

1 Image

Overview

Quantity:	100 µg
Target:	CCL4
Binding Specificity:	AA 1-92
Reactivity:	Human
Host:	Rabbit
Clonality:	Polyclonal
Conjugate:	This CCL4 antibody is un-conjugated
Application:	Western Blotting (WB)

Product Details

Purpose:	Rabbit polyclonal antibody raised against a full-length human CCL4 protein.
Immunogen:	CCL4 (NP_002975.1, 1 a.a. ~ 92 a.a) full-length human protein.
Sequence:	MKLCVTVLSL LMLVAAFCSL ALSAPMGSDP PTACCFSYTA RKLPRNFVVD YYETSSLCSQ PAVVFQTKRS KQVCADPSES WVQEYVDLE LN
Cross-Reactivity:	Human
Characteristics:	Antibody reactive against mammalian transfected lysate.

Target Details

Target:	CCL4
Alternative Name:	CCL4 (CCL4 Products)

Target Details

Background:	Full Gene Name: chemokine (C-C motif) ligand 4 Synonyms: ACT2,AT744.1,G-26,LAG1,MGC104418,MGC126025,MGC126026,MIP-1-beta,MIP1B,MIP1B1,SCYA2,SCYA4
Gene ID:	6351
NCBI Accession:	NM_002984

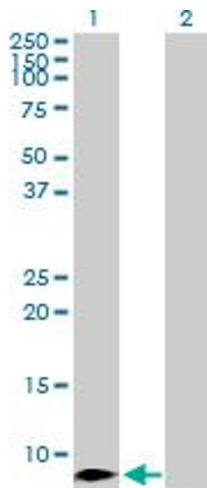
Application Details

Application Notes:	Optimal working dilution should be determined by the investigator.
Restrictions:	For Research Use only

Handling

Buffer:	In 1x PBS, pH 7.4
Handling Advice:	Aliquot to avoid repeated freezing and thawing.
Storage:	-20 °C
Storage Comment:	Store at -20°C or lower. Aliquot to avoid repeated freezing and thawing.

Images



Western Blotting

Image 1. Western Blot analysis of CCL4 expression in transfected 293T cell line by CCL4 MaxPab polyclonal antibody.

Lane 1: CCL4 transfected lysate(10.20 KDa).

Lane 2: Non-transfected lysate.