



[Go to Product page](#)

Datasheet for ABIN520075

anti-CXCL6 antibody (AA 1-114)

1 Image

1 Publication

Overview

Quantity:	100 µg
Target:	CXCL6
Binding Specificity:	AA 1-114
Reactivity:	Human
Host:	Rabbit
Clonality:	Polyclonal
Conjugate:	This CXCL6 antibody is un-conjugated
Application:	Western Blotting (WB)

Product Details

Purpose:	Rabbit polyclonal antibody raised against a full-length human CXCL6 protein.
Immunogen:	CXCL6 (NP_002984.1, 1 a.a. ~ 114 a.a) full-length human protein.
Sequence:	MSLPSSRAAR VPGPSGSLCA LLALLLLLTP PGPLASAGPV SAVLTELRCT CLRVTLRVNP KTIGKLQVFP AGPQCSKVEV VASLKNGKQV CLDPEAPFLK KVIQKILDSG NKKN
Cross-Reactivity:	Human
Characteristics:	Antibody reactive against mammalian transfected lysate.

Target Details

Target:	CXCL6
Alternative Name:	CXCL6 (CXCL6 Products)

Target Details

Background:	Full Gene Name: chemokine (C-X-C motif) ligand 6 (granulocyte chemotactic protein 2) Synonyms: CKA-3,GCP-2,GCP2,SCYB6
Gene ID:	6372
NCBI Accession:	NM_002993

Application Details

Application Notes:	Optimal working dilution should be determined by the investigator.
Restrictions:	For Research Use only

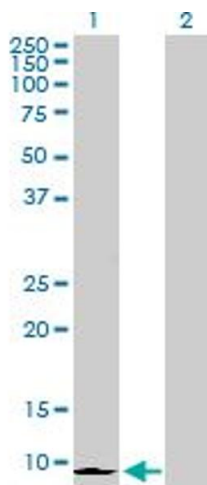
Handling

Buffer:	In 1x PBS, pH 7.4
Handling Advice:	Aliquot to avoid repeated freezing and thawing.
Storage:	-20 °C
Storage Comment:	Store at -20°C or lower. Aliquot to avoid repeated freezing and thawing.

Publications

Product cited in:	Vaithilingam, Quayum, Joglekar, Jensen, Hardikar, Oberholzer, Guillemin, Tuch: "Effect of alginate encapsulation on the cellular transcriptome of human islets." in: Biomaterials , Vol. 32, Issue 33, pp. 8416-25, (2011) (PubMed).
-------------------	---

Images



Western Blotting

Image 1. Western Blot analysis of CXCL6 expression in transfected 293T cell line by CXCL6 MaxPab polyclonal antibody.

Lane 1: CXCL6 transfected lysate(11.90 kDa).

Lane 2: Non-transfected lysate.