



[Go to Product page](#)

Datasheet for ABIN520076  
**anti-CXCL6 antibody (AA 1-114)**

1 Image

Overview

Quantity:	100 µg
Target:	CXCL6
Binding Specificity:	AA 1-114
Reactivity:	Human
Host:	Mouse
Clonality:	Monoclonal
Conjugate:	This CXCL6 antibody is un-conjugated
Application:	ELISA

Product Details

Purpose:	Mouse monoclonal antibody raised against a full-length recombinant CXCL6.
Immunogen:	CXCL6 (AAH13744, 1 a.a. ~ 114 a.a) full-length recombinant protein with GST tag. MW of the GST tag alone is 26 KDa.
Sequence:	MSLPSSRAAR VPGPSGSLCA LLALLLLLTP PGPLASAGPV SAVLTELRCT CLRVTLRVNP KTIGKLQVFP AGPQCSKVEV VASLKNGKQV CLDPEAPFLK KVIQKILD SG NKKN
Clone:	2G12
Isotype:	IgG2a
Cross-Reactivity:	Human
Characteristics:	Antibody Reactive Against Recombinant Protein.

## Target Details

Target:	CXCL6
Alternative Name:	CXCL6 ( <a href="#">CXCL6 Products</a> )
Background:	Full Gene Name: chemokine (C-X-C motif) ligand 6 (granulocyte chemotactic protein 2) Synonyms: CKA-3,GCP-2,GCP2,SCYB6
Gene ID:	6372

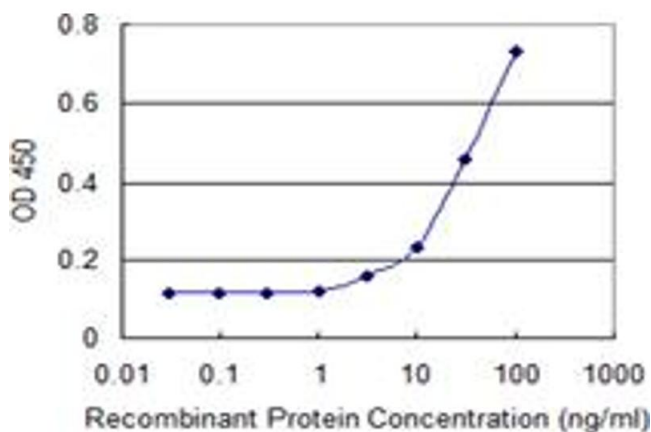
## Application Details

Application Notes:	Optimal working dilution should be determined by the investigator.
Restrictions:	For Research Use only

## Handling

Buffer:	In 1x PBS, pH 7.4
Handling Advice:	Aliquot to avoid repeated freezing and thawing.
Storage:	-20 °C
Storage Comment:	Store at -20°C or lower. Aliquot to avoid repeated freezing and thawing.

## Images



### ELISA

**Image 1.** Detection limit for recombinant GST tagged CXCL6 is 1 ng/ml as a capture antibody.