

Datasheet for ABIN520087
anti-XCL1 antibody (AA 22-114)



[Go to Product page](#)

2 Images

Overview

Quantity:	100 µg
Target:	XCL1
Binding Specificity:	AA 22-114
Reactivity:	Human
Host:	Mouse
Clonality:	Monoclonal
Conjugate:	This XCL1 antibody is un-conjugated
Application:	Western Blotting (WB), ELISA, Immunohistochemistry (Paraffin-embedded Sections) (IHC (p))

Product Details

Purpose:	Mouse monoclonal antibody raised against a partial recombinant XCL1.
Immunogen:	XCL1 (NP_002986, 22 a.a. ~ 114 a.a) partial recombinant protein with GST tag. MW of the GST tag alone is 26 KDa.
Sequence:	VGSEVSDKRT CVSLTTQRLP VSRIKTYTIT EGSLRAVIFI TKRGLKVCAD PQATWVRDVV RSMDRKSNTR NNMIQTKPTG TQQSTNTAVT LTG
Clone:	1E1
Isotype:	IgG2a
Cross-Reactivity:	Human
Characteristics:	Antibody Reactive Against Recombinant Protein.

Target Details

Target:	XCL1
Alternative Name:	XCL1 (XCL1 Products)
Background:	Full Gene Name: chemokine (C motif) ligand 1 Synonyms: ATAC,LPTN,LTN,SCM-1,SCM-1a,SCM1,SCYC1
Gene ID:	6375
NCBI Accession:	NM_002995
Pathways:	Regulation of Leukocyte Mediated Immunity , Positive Regulation of Immune Effector Process , Production of Molecular Mediator of Immune Response , Activated T Cell Proliferation

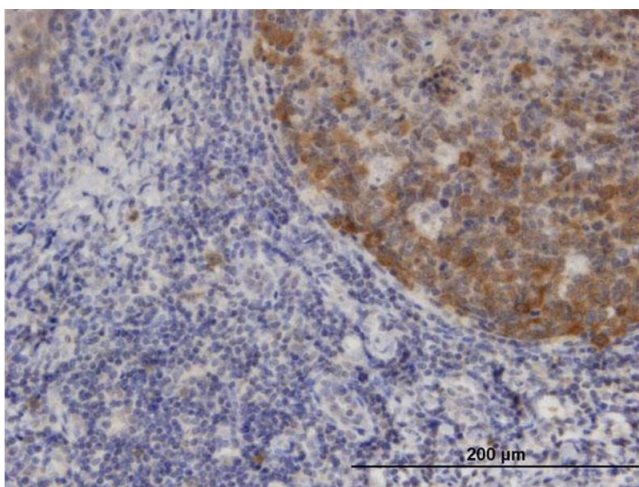
Application Details

Application Notes:	Optimal working dilution should be determined by the investigator.
Restrictions:	For Research Use only

Handling

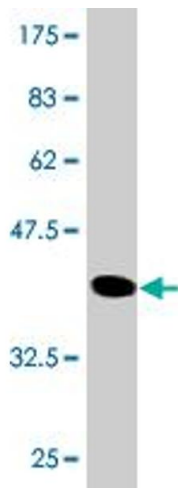
Buffer:	In 1x PBS, pH 7.4
Handling Advice:	Aliquot to avoid repeated freezing and thawing.
Storage:	-20 °C
Storage Comment:	Store at -20°C or lower. Aliquot to avoid repeated freezing and thawing.

Images



Immunostaining

Image 1. Immunoperoxidase of monoclonal antibody to XCL1 on formalin-fixed paraffin-embedded human tonsil. [antibody concentration 3 ug/ml]



Western Blotting

Image 2. Western Blot detection against Immunogen (35.97 kDa).