



[Go to Product page](#)

Datasheet for ABIN520089

anti-Syndecan 2 antibody (AA 32-130)

2 Images

Overview

Quantity:	100 µg
Target:	Syndecan 2 (SDC2)
Binding Specificity:	AA 32-130
Reactivity:	Human
Host:	Mouse
Clonality:	Monoclonal
Conjugate:	This Syndecan 2 antibody is un-conjugated
Application:	Western Blotting (WB), ELISA

Product Details

Purpose:	Mouse monoclonal antibody raised against a partial recombinant SDC2.
Immunogen:	SDC2 (NP_002989.2, 32 a.a. ~ 130 a.a) partial recombinant protein with GST tag. MW of the GST tag alone is 26 KDa.
Sequence:	LDNSSIEEAS GVYPIDDDDY ASASGSGADE DVESPELTTS RPLPKILLTS AAPKVETTLL NIQNKIPAQT KSPEETDKEK VHLSDSERKM DPAEEDTNV
Clone:	1B2
Isotype:	IgG2a
Cross-Reactivity:	Human
Characteristics:	Antibody Reactive Against Recombinant Protein.

Target Details

Target:	Syndecan 2 (SDC2)
Alternative Name:	SDC2 (SDC2 Products)
Background:	Full Gene Name: syndecan 2 Synonyms: HSPG,HSPG1,SYND2
Gene ID:	6383
NCBI Accession:	NM_002998
Pathways:	Glycosaminoglycan Metabolic Process

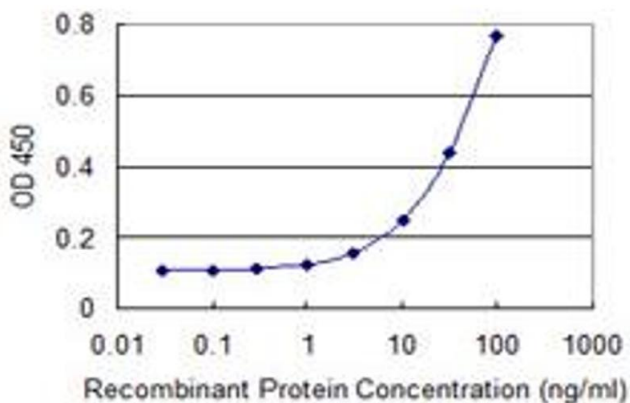
Application Details

Application Notes:	Optimal working dilution should be determined by the investigator.
Restrictions:	For Research Use only

Handling

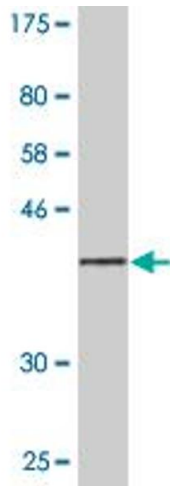
Buffer:	In 1x PBS, pH 7.4
Handling Advice:	Aliquot to avoid repeated freezing and thawing.
Storage:	-20 °C
Storage Comment:	Store at -20°C or lower. Aliquot to avoid repeated freezing and thawing.

Images



ELISA

Image 1. Detection limit for recombinant GST tagged SDC2 is 1 ng/ml as a capture antibody.



Western Blotting

Image 2. Western Blot detection against Immunogen (36.63 kDa).