



[Go to Product page](#)

Datasheet for ABIN520155
anti-SGCD antibody (AA 1-290)

2 Images

Overview

Quantity:	100 µL
Target:	SGCD
Binding Specificity:	AA 1-290
Reactivity:	Human
Host:	Rabbit
Clonality:	Polyclonal
Conjugate:	This SGCD antibody is un-conjugated
Application:	Western Blotting (WB), Immunoprecipitation (IP)

Product Details

Purpose:	Rabbit polyclonal antibody raised against a full-length human SGCD protein.
Immunogen:	SGCD (NP_000328.2, 1 a.a. ~ 290 a.a) full-length human protein.
Sequence:	MMPQEYTHH RSTMPGSVGP QVYKVGIYGW RKRCLYFFVL LLMILILVNL AMTIWILKVM NFTIDGMGNL RITEKGLKLE GDSEFLQPLY AKEIQSRPGN ALYFKSARNV TVNILNDQTK VLTQLITGPK AVEAYGKKFE VKTVSGKLLF SADNNEVVVG AERLRVLGAE GTVFPKSIET PNVRADPFKE LRLESPTRSL VMEAPKGVEI NAEAGNMEAT CRTELRLLESK DGEIKLDAAK IRLPRLPHGS YTPTGTRQKV FEICVCANGR LFLSQAGAGS TCQINTSVCL
Cross-Reactivity:	Human
Characteristics:	Antibody reactive against mammalian transfected lysate.

Target Details

Target:	SGCD
Alternative Name:	SGCD (SGCD Products)
Background:	Full Gene Name: sarcoglycan, delta (35 kDa dystrophin-associated glycoprotein) Synonyms: 35DAG,CMD1L,DAGD,MGC22567,SG-delta,SGCDP,SGD
Gene ID:	6444
NCBI Accession:	NM_000337
Pathways:	Maintenance of Protein Location

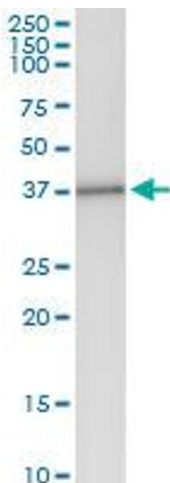
Application Details

Application Notes:	Optimal working dilution should be determined by the investigator.
Restrictions:	For Research Use only

Handling

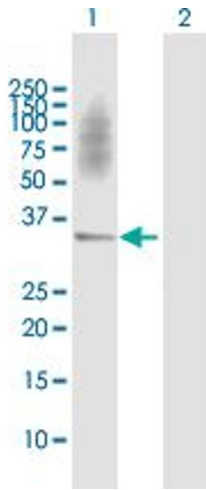
Format:	Liquid
Buffer:	No additive
Preservative:	Without preservative
Handling Advice:	Aliquot to avoid repeated freezing and thawing.
Storage:	-20 °C
Storage Comment:	Store at -20°C or lower. Aliquot to avoid repeated freezing and thawing.

Images



Immunoprecipitation

Image 1. Immunoprecipitation of SGCD transfected lysate using anti-SGCD MaxPab rabbit polyclonal antibody and Protein A Magnetic Bead , and immunoblotted with SGCD MaxPab mouse polyclonal antibody (B01) .



Western Blotting

Image 2. Western Blot analysis of SGCD expression in transfected 293T cell line by SGCD MaxPab polyclonal antibody.

Lane 1: SGCD transfected lysate(32.20 KDa).

Lane 2: Non-transfected lysate.