



[Go to Product page](#)

Datasheet for ABIN520161
anti-SGSH antibody (AA 1-502)

1 Image

Overview

Quantity:	50 µg
Target:	SGSH
Binding Specificity:	AA 1-502
Reactivity:	Human
Host:	Mouse
Clonality:	Polyclonal
Conjugate:	This SGSH antibody is un-conjugated
Application:	Western Blotting (WB)

Product Details

Purpose:	Mouse polyclonal antibody raised against a full-length human SGSH protein.
Immunogen:	SGSH (NP_000190.1, 1 a.a. ~ 502 a.a) full-length human protein.
Sequence:	MSCPVPACCA LLLVLGLCRA RPRNALLLLA DDGGFESGAY NNSAIATPHL DALARRSLLF RNAFTSVSSC SPSRASLLTG LPQHQNMGMYG LHQDVHHFNS FDKVRSPLLL LSQAGVRTGI IGKKHVGPEP VYPDFDAYTE ENGSVLQVGR NITRIKLLVR KFLQTQDDRP FFLYVAFHDP HRCGHSQPQY GTFCEKFGNG ESGMGRIPDW TPQAYDPLDV LVPYFVPNTP AARADLAAQY TTVGRMDQGV GLVLQELRDA GVLNNTLVIF TSDNGIPFPS GRNLYWPWT AEPLLVSSE HPKRWGQVSE AYVSLLDLTP TILDWFSIPY PSYAIFGSKT IHLTGRSLLP ALEAEPLWAT VFGSQSHHEV TMSYPMRSVQ HRHFRLVHNL NFKMPFPIDQ DFYVSPTFQD LLNRTTAGQP TGWYKDLRHY YYRARWELYD RSRDPHETQN LATDPRFAQL LEMLRDQLAK WQWETHDPWW CAPDGVLEEK LSPQCQPLHN EL

Product Details

Cross-Reactivity:	Human
Characteristics:	Antibody reactive against mammalian transfected lysate.

Target Details

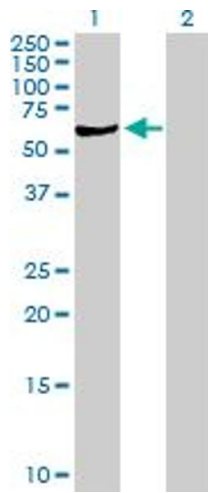
Target:	SGSH
Alternative Name:	SGSH (SGSH Products)
Background:	Full Gene Name: N-sulfoglucosamine sulfohydrolase Synonyms: HSS,MPS3A,SFMD
Gene ID:	6448
NCBI Accession:	NM_000199
Pathways:	Glycosaminoglycan Metabolic Process

Application Details

Application Notes:	Optimal working dilution should be determined by the investigator.
Restrictions:	For Research Use only

Handling

Buffer:	In 1x PBS, pH 7.4
Handling Advice:	Aliquot to avoid repeated freezing and thawing.
Storage:	-20 °C
Storage Comment:	Store at -20°C or lower. Aliquot to avoid repeated freezing and thawing.



Western Blotting

Image 1. Western Blot analysis of SGSH expression in transfected 293T cell line by SGSH MaxPab polyclonal antibody.

Lane 1: SGSH transfected lysate(55.22 KDa).

Lane 2: Non-transfected lysate.