



[Go to Product page](#)

Datasheet for ABIN520179

anti-SHMT1 antibody (AA 1-483)

2 Images

Overview

Quantity:	100 µg
Target:	SHMT1
Binding Specificity:	AA 1-483
Reactivity:	Human
Host:	Rabbit
Clonality:	Polyclonal
Conjugate:	This SHMT1 antibody is un-conjugated
Application:	Western Blotting (WB)

Product Details

Purpose:	Rabbit polyclonal antibody raised against a full-length human SHMT1 protein.
Immunogen:	SHMT1 (NP_004160.3, 1 a.a. ~ 483 a.a) full-length human protein.
Sequence:	MTMPVNGAHK DADLWSSHDK MLAQPLKDSD VEVYNIKKE SNRQRVGLLEL IASENFASRA VLEALGSCLN NKYSEGYPGQ RYGGTEFID ELETLCQKRA LQAYKLDPOC WGVNVQPYSG SPANFAVYTA LVEPHGRIMG LDLPDGGHLT HGFMTDKKKI SATSIFFESM PYKVNPDGTG INYDQLEENA RLFHPKLIIA GTSCYSRNL EYARLRKIAD NGAYLMADMA HISGLVAAGV VPSPFEHCHV VTTTTHTKTLR GCRAGMIFYR KGVKSVDPKT GKEILYNLES LINSVFPGL QGGPHNHAIA GVAVALKQAM TLEFKVYQHQ WVANCRALSE ALTELGKIV TGGSDNHLIL VDLRSGTGDG GRAEKVLEAC SIACNKNTCP GDRSALRPSG LRLGTPALTS RGLLEKDFQK VAHFIHRGIE LTLQIQSDTG VRATLKEFKE RLAGDKYQAA VQALREEVES FASLFPLPGL PDF
Cross-Reactivity:	Human

Product Details

Characteristics: Antibody reactive against mammalian transfected lysate.

Target Details

Target: SHMT1

Alternative Name: SHMT1 ([SHMT1 Products](#))

Background: Full Gene Name: serine hydroxymethyltransferase 1 (soluble)
Synonyms: CSHMT,MGC15229,MGC24556,SHMT

Gene ID: 6470

NCBI Accession: [NM_004169](#)

Application Details

Application Notes: Optimal working dilution should be determined by the investigator.

Restrictions: For Research Use only

Handling

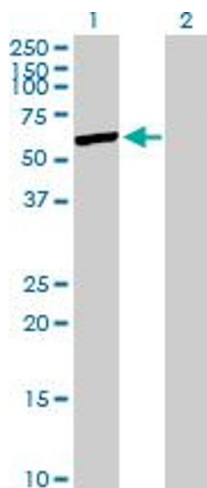
Buffer: In 1x PBS, pH 7.4

Handling Advice: Aliquot to avoid repeated freezing and thawing.

Storage: -20 °C

Storage Comment: Store at -20°C or lower. Aliquot to avoid repeated freezing and thawing.

Images

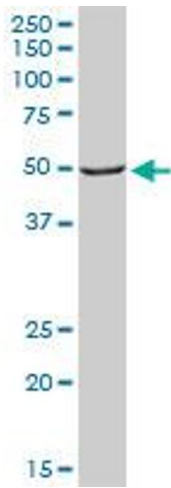


Western Blotting

Image 1. Western Blot analysis of SHMT1 expression in transfected 293T cell line by SHMT1 MaxPab polyclonal antibody.

Lane 1: SHMT1 transfected lysate(53.10 KDa).

Lane 2: Non-transfected lysate.



Western Blotting

Image 2. SHMT1 MaxPab rabbit polyclonal antibody.
Western Blot analysis of SHMT1 expression in human liver.