



[Go to Product page](#)

Datasheet for ABIN520180  
**anti-SHMT2 antibody (AA 1-504)**

4 Images

Overview

Quantity:	50 µg
Target:	SHMT2
Binding Specificity:	AA 1-504
Reactivity:	Human
Host:	Mouse
Clonality:	Polyclonal
Conjugate:	This SHMT2 antibody is un-conjugated
Application:	Western Blotting (WB), Immunofluorescence (IF)

Product Details

Purpose:	Mouse polyclonal antibody raised against a full-length human SHMT2 protein.
Immunogen:	SHMT2 (NP_005403.2, 1 a.a. ~ 504 a.a) full-length human protein.
Sequence:	MLYFSLFWAA RPLQRCGQLV RMAIRAQHSN AAQTQTGEAN RGWTGQESLS DSDPEMWELL QREKDRQCRG LELIASENFC SRAALEALGS CLNNKYSEGY PGKRYYGGA E VVDEIELLCQ RRALEAFDL D PAQWGVNVQP YSGSPANLAV YTALLQPHDR IMGLDLPDGG HLTHGYMSDV KRISATSIFF ESMFYKLNPK TGLIDYNQLA LTARLFRPRL IIAGTSAYAR LIDYARMREV CDEVKAHLLA DMAHISGLVA AKVIPSPFKH ADIVTTTTHK TLRGARSGLI FYRKGVKAVD PKTGREIPYT FEDRINFAVF PSLQGGPHNH AIAAVAVALK QACTPMFREY SLQVLKNARA MADALLERGY SLVSGGTDNH LVLVDLRPKG LDGARAERVL ELVSITANKN TPCGDRSAIT PGGLRLGAPA LTRQFREDD FRRVDFIDE GVNIGLEVKS KTAKLQDFKS FLLKDSETSQ RLANLRQRVE QFARAFMPG FDEH

## Product Details

---

Cross-Reactivity:	Human
Characteristics:	Antibody reactive against mammalian transfected lysate.

## Target Details

---

Target:	SHMT2
Alternative Name:	SHMT2 ( <a href="#">SHMT2 Products</a> )
Background:	Full Gene Name: serine hydroxymethyltransferase 2 (mitochondrial) Synonyms: GLYA,SHMT
Gene ID:	6472
NCBI Accession:	<a href="#">NM_005412</a>

## Application Details

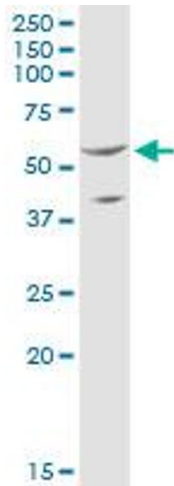
---

Application Notes:	Optimal working dilution should be determined by the investigator.
Restrictions:	For Research Use only

## Handling

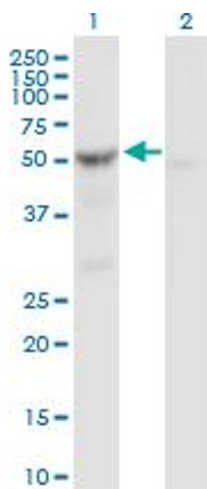
---

Buffer:	In 1x PBS, pH 7.4
Handling Advice:	Aliquot to avoid repeated freezing and thawing.
Storage:	-20 °C
Storage Comment:	Store at -20°C or lower. Aliquot to avoid repeated freezing and thawing.



#### Western Blotting

**Image 1.** SHMT2 MaxPab polyclonal antibody. Western Blot analysis of SHMT2 expression in HeLa.

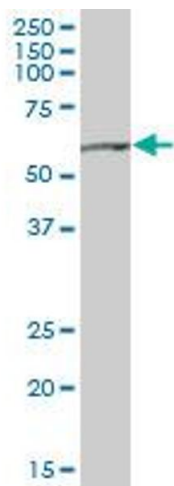


#### Western Blotting

**Image 2.** Western Blot analysis of SHMT2 expression in transfected 293T cell line by SHMT2 MaxPab polyclonal antibody.

Lane 1: SHMT2 transfected lysate(55.44 KDa).

Lane 2: Non-transfected lysate.



#### Western Blotting

**Image 3.** SHMT2 MaxPab polyclonal antibody. Western Blot analysis of SHMT2 expression in human spleen.

Please check the [product details page](#) for more images. Overall 4 images are available for ABIN520180.