

Datasheet for ABIN520186

anti-Sucrase Isomaltase antibody (AA 1728-1826)



[Go to Product page](#)

2 Images

Overview

Quantity:	100 µg
Target:	Sucrase Isomaltase (SI)
Binding Specificity:	AA 1728-1826
Reactivity:	Human
Host:	Mouse
Clonality:	Monoclonal
Conjugate:	This Sucrase Isomaltase antibody is un-conjugated
Application:	Western Blotting (WB), ELISA

Product Details

Purpose:	Mouse monoclonal antibody raised against a partial recombinant SI.
Immunogen:	SI (NP_001032, 1728 a.a. ~ 1826 a.a) partial recombinant protein with GST tag. MW of the GST tag alone is 26 KDa.
Sequence:	DGESIDTYER DLYLSVQFNL NQTTLTSTIL KRGYINKSET RLGSLHVWGK GTTPVNAVTL TYNGNKNSLP FNEDTTNMIL RIDLTTHNVT LEEPIEINW
Clone:	1A8
Isotype:	IgG2b
Cross-Reactivity:	Human
Characteristics:	Antibody Reactive Against Recombinant Protein.

Target Details

Target:	Sucrase Isomaltase (SI)
Alternative Name:	Sucrase-isomaltase (SI) (SI Products)
Background:	Full Gene Name: sucrase-isomaltase (alpha-glucosidase) Synonyms: MGC131621,MGC131622
Gene ID:	6476
NCBI Accession:	NM_001041

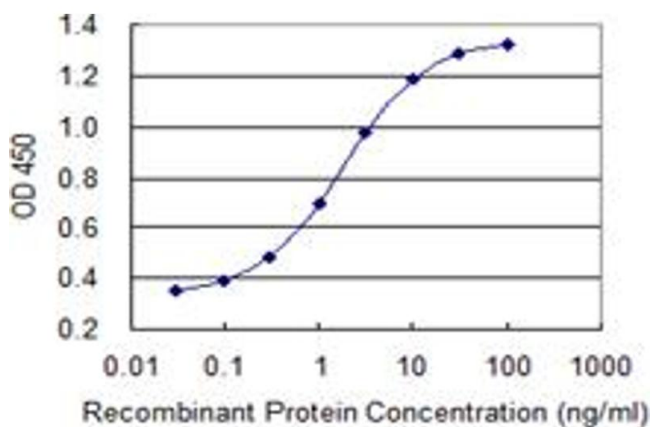
Application Details

Application Notes:	Optimal working dilution should be determined by the investigator.
Restrictions:	For Research Use only

Handling

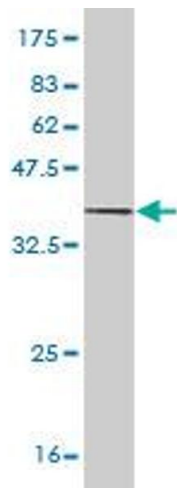
Buffer:	In 1x PBS, pH 7.4
Handling Advice:	Aliquot to avoid repeated freezing and thawing.
Storage:	-20 °C
Storage Comment:	Store at -20°C or lower. Aliquot to avoid repeated freezing and thawing.

Images



ELISA

Image 1. Detection limit for recombinant GST tagged SI is 0.03 ng/ml as a capture antibody.



Western Blotting

Image 2. Western Blot detection against Immunogen (36.63 kDa).