



[Go to Product page](#)

Datasheet for ABIN520191  
**anti-ST6GAL1 antibody (AA 1-175)**

2 Images

Overview

Quantity:	100 µg
Target:	ST6GAL1
Binding Specificity:	AA 1-175
Reactivity:	Human
Host:	Rabbit
Clonality:	Polyclonal
Conjugate:	This ST6GAL1 antibody is un-conjugated
Application:	Western Blotting (WB)

Product Details

Purpose:	Rabbit polyclonal antibody raised against a full-length human ST6GAL1 protein.
Immunogen:	ST6GAL1 (NP_775324.1, 1 a.a. ~ 175 a.a) full-length human protein.
Sequence:	MNSQLVTTEK RFLKDSLNE GILIVWDPVS YHSDIPKWYQ NPDYNFFNNY KTYRKLHPNQ PFYILKPQMP WELWDILQEI SPEEQPNPP SSGMLGIIM MTLCDQVDIY EFLPSKRKTD VCYYYQKFFD SACTMGAYHP LLYEKNLVKH LNQGTDEDIY LLGKATLPGF RTIHC
Cross-Reactivity:	Human, Mouse
Characteristics:	Antibody reactive against mammalian transfected lysate.

Target Details

Target:	ST6GAL1
---------	---------

## Target Details

Alternative Name:	ST6GAL1 ( <a href="#">ST6GAL1 Products</a> )
Background:	Full Gene Name: ST6 beta-galactosamide alpha-2,6-sialyltransferase 1 Synonyms: CD75,MGC48859,SIAT1,ST6GalI,ST6N
Gene ID:	6480
NCBI Accession:	<a href="#">NM_173217</a>

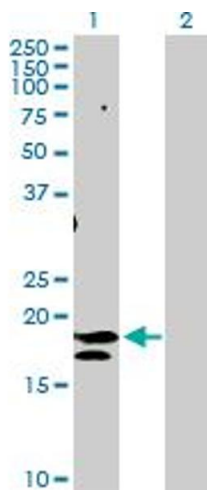
## Application Details

Application Notes:	Optimal working dilution should be determined by the investigator.
Restrictions:	For Research Use only

## Handling

Buffer:	In 1x PBS, pH 7.4
Handling Advice:	Aliquot to avoid repeated freezing and thawing.
Storage:	-20 °C
Storage Comment:	Store at -20°C or lower. Aliquot to avoid repeated freezing and thawing.

## Images

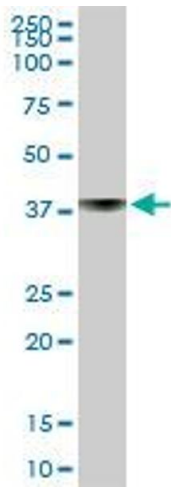


### Western Blotting

**Image 1.** Western Blot analysis of ST6GAL1 expression in transfected 293T cell line by ST6GAL1 MaxPab polyclonal antibody.

Lane 1: ST6GAL1 transfected lysate(20.80 KDa).

Lane 2: Non-transfected lysate.



### Western Blotting

**Image 2.** ST6GAL1 MaxPab rabbit polyclonal antibody. Western Blot analysis of ST6GAL1 expression in mouse liver.