

Datasheet for ABIN520213
anti-SKP1 antibody (AA 1-160)

2 Images

[Go to Product page](#)

Overview

Quantity:	100 µg
Target:	SKP1
Binding Specificity:	AA 1-160
Reactivity:	Human
Host:	Rabbit
Clonality:	Polyclonal
Conjugate:	This SKP1 antibody is un-conjugated
Application:	Western Blotting (WB), Proximity Ligation Assay (PLA)

Product Details

Purpose:	Rabbit polyclonal antibody raised against a full-length human SKP1 protein.
Immunogen:	SKP1 (NP_008861.2, 1 a.a. ~ 160 a.a) full-length human protein.
Sequence:	MPSIKLQSSD GEIFEVDVEI AKQSVTIKTM LEDLGMDDDEG DDDPVPLPNV NAAILKKVIQ WCTHHKDDPP PPEDDENKEK RTDDIPVWDQ EFLKVDQGT L FELILAANYL DIKGLLDVTC KTVANMIK GK TP E EIRKTFN IKNDFTEEEE AQVGSTQFCL
Cross-Reactivity:	Human
Characteristics:	Antibody reactive against mammalian transfected lysate.

Target Details

Target:	SKP1
---------	------

Target Details

Alternative Name:	SKP1 (SKP1 Products)
Background:	Full Gene Name: S-phase kinase-associated protein 1 Synonyms: EMC19,MGC34403,OCP-II,OCP2,SKP1A,TCEB1L,p19A
Gene ID:	6500
NCBI Accession:	NM_006930
Pathways:	Cell Division Cycle, Hedgehog Signaling, Mitotic G1-G1/S Phases

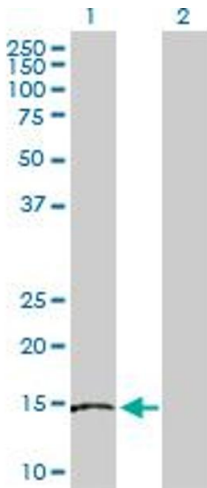
Application Details

Application Notes:	Optimal working dilution should be determined by the investigator.
Restrictions:	For Research Use only

Handling

Buffer:	In 1x PBS, pH 7.4
Handling Advice:	Aliquot to avoid repeated freezing and thawing.
Storage:	-20 °C
Storage Comment:	Store at -20°C or lower. Aliquot to avoid repeated freezing and thawing.

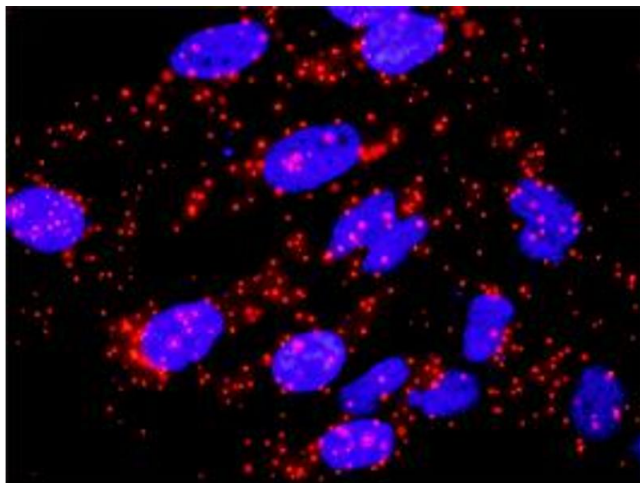
Images



Western Blotting

Image 1. Western Blot analysis of SKP1 expression in transfected 293T cell line by SKP1 MaxPab polyclonal antibody.

Lane 1: SKP1 transfected lysate(18.10 KDa).
Lane 2: Non-transfected lysate.



Proximity Ligation Assay

Image 2. Proximity Ligation Analysis of protein-protein interactions between SKP1 and CACYBP. HeLa cells were stained with anti-SKP1 rabbit purified polyclonal 1:1200 and anti-CACYBP mouse monoclonal antibody 1:50. Each red dot represents the detection of protein-protein interaction complex, and nuclei were counterstained with DAPI (blue).