



Datasheet for ABIN520225
anti-SLC1A3 antibody (AA 1-542)



[Go to Product page](#)

1 Image

1 Publication

Overview

Quantity:	100 µg
Target:	SLC1A3
Binding Specificity:	AA 1-542
Reactivity:	Human
Host:	Rabbit
Clonality:	Polyclonal
Conjugate:	This SLC1A3 antibody is un-conjugated
Application:	Western Blotting (WB)

Product Details

Purpose:	Rabbit polyclonal antibody raised against a full-length human SLC1A3 protein.
Immunogen:	SLC1A3 (NP_004163.2, 1 a.a. ~ 542 a.a) full-length human protein.
Sequence:	MTKSNGEETPK MGGRMERFQQ GVSKRTLLAK KKVQNITKED VKSYLFRNAF VLLTVTAVIV GTILGFTLRP YRMSYREVKY FSFPGELLMR MLQMLVLPLI ISSLVTGMAA LDSKASGKMG MRAVVYYMTT TIIAVVIGII IVIIHPGKG TKENMHREGK IVRVTAADAF LDLIRNMFPF NLVEACFKQF KTNYEKRSFK VPIQANETLV GAVINNVSEA METLTRITEE LVPVPGSVNG VNALGLVVFS MCFGFVIGNM KEQGQALREF FDSLNEAIMR LVAVIMWYAP VGILFLIAGK IVEMEDMGVI GGQLAMYTVT VIVGLLIHAV IVLPLLYFLV TRKNPWVFIG GLLQALITAL GTSSSSATLP ITFKCLEENN GVDKRVTRFV LPVGATINMD GTALYEALAA IFIAQVNNFE LNFGQIITIS ITATAASIGA AGIPQAGLVT MVIVLTSVGL PTDDITLIIA VDWFLDRLRT TTNVLGDSL AGIVEHLRSH ELKNRDVEMG NSVIEENEMK KPYQLIAQDN ETEKPIDSET KM

Product Details

Cross-Reactivity:	Human
Characteristics:	Antibody reactive against mammalian transfected lysate.

Target Details

Target:	SLC1A3
Alternative Name:	SLC1A3 (SLC1A3 Products)
Background:	Full Gene Name: solute carrier family 1 (glial high affinity glutamate transporter), member 3 Synonyms: EA6,EAAT1,FLJ25094,GLAST,GLAST1
Gene ID:	6507
NCBI Accession:	NM_004172
Pathways:	Sensory Perception of Sound , Synaptic Membrane , Dicarboxylic Acid Transport

Application Details

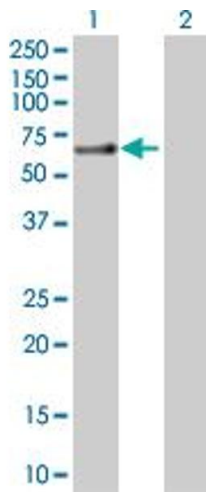
Application Notes:	Optimal working dilution should be determined by the investigator.
Restrictions:	For Research Use only

Handling

Buffer:	In 1x PBS, pH 7.4
Handling Advice:	Aliquot to avoid repeated freezing and thawing.
Storage:	-20 °C
Storage Comment:	Store at -20°C or lower. Aliquot to avoid repeated freezing and thawing.

Publications

Product cited in:	Xiao, Li, Jones-Brando, Yolken: "Abnormalities of neurotransmitter and neuropeptide systems in human neuroepithelioma cells infected by three Toxoplasma strains." in: Journal of neural transmission (Vienna, Austria : 1996) , Vol. 120, Issue 12, pp. 1631-9, (2013) (PubMed).
-------------------	------------------------------------------------------------------------------------------------------------------------------------------------------------------------------------------------------------------------------------------------------------------------------------------------------------



Western Blotting

Image 1. Western Blot analysis of SLC1A3 expression in transfected 293T cell line by SLC1A3 MaxPab polyclonal antibody.

Lane 1: SLC1A3 transfected lysate(59.50 KDa).

Lane 2: Non-transfected lysate.