

Datasheet for ABIN520227
anti-GLUT4 antibody (AA 467-509)[Go to Product page](#)

2 Images

Overview

Quantity:	100 µg
Target:	GLUT4 (SLC2A4)
Binding Specificity:	AA 467-509
Reactivity:	Human
Host:	Mouse
Clonality:	Monoclonal
Conjugate:	This GLUT4 antibody is un-conjugated
Application:	Western Blotting (WB), ELISA

Product Details

Purpose:	Mouse monoclonal antibody raised against a partial recombinant SLC2A4.
Immunogen:	SLC2A4 (NP_001033, 467 a.a. ~ 509 a.a) partial recombinant protein with GST tag. MW of the GST tag alone is 26 KDa.
Sequence:	RVPETRGRTF DQISAAFHRT PSLLEQEVKP STELEYLGPD END
Clone:	2A4
Isotype:	IgG2a
Cross-Reactivity:	Human
Characteristics:	Antibody Reactive Against Recombinant Protein.

Target Details

Target:	GLUT4 (SLC2A4)
Alternative Name:	SLC2A4 (SLC2A4 Products)
Background:	Full Gene Name: solute carrier family 2 (facilitated glucose transporter), member 4 Synonyms: GLUT4
Gene ID:	6517
NCBI Accession:	NM_001042
Pathways:	AMPK Signaling , Carbohydrate Homeostasis , Proton Transport , Brown Fat Cell Differentiation , Warburg Effect

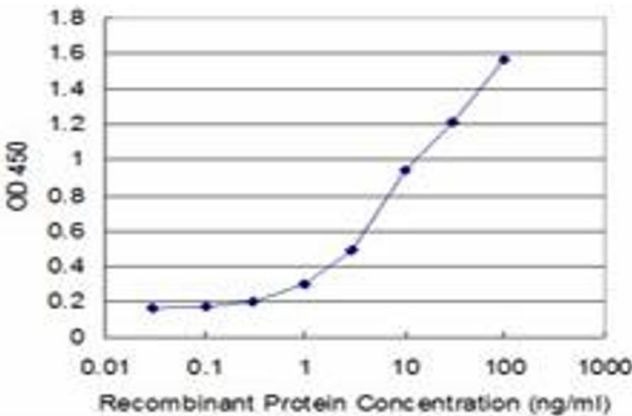
Application Details

Application Notes:	Optimal working dilution should be determined by the investigator.
Restrictions:	For Research Use only

Handling

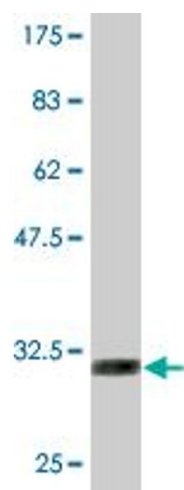
Buffer:	In 1x PBS, pH 7.4
Handling Advice:	Aliquot to avoid repeated freezing and thawing.
Storage:	-20 °C
Storage Comment:	Store at -20°C or lower. Aliquot to avoid repeated freezing and thawing.

Images



ELISA

Image 1. Detection limit for recombinant GST tagged SLC2A4 is approximately 0.3ng/ml as a capture antibody.



Western Blotting

Image 2. Western Blot detection against Immunogen (30.47 kDa) .