

Datasheet for ABIN520238
anti-SLC3A1 antibody (AA 211-320)

3 Images

[Go to Product page](#)

Overview

Quantity:	100 µg
Target:	SLC3A1
Binding Specificity:	AA 211-320
Reactivity:	Human
Host:	Mouse
Clonality:	Monoclonal
Conjugate:	This SLC3A1 antibody is un-conjugated
Application:	Western Blotting (WB), ELISA, Immunofluorescence (IF)

Product Details

Purpose:	Mouse monoclonal antibody raised against a partial recombinant SLC3A1.
Immunogen:	SLC3A1 (AAH22386, 211 a.a. ~ 320 a.a) partial recombinant protein with GST tag. MW of the GST tag alone is 26 KDa.
Sequence:	FIPNHTSDKH IWFQLSRTRT GKYTDYYIWH DCTHENGKTI PPNNWLSVYG NSSWHFDEV R NQCYFHQFMK EQPDLNFRNP DVQEEIKEIL RFWLTKGVDG FSLDAVKFLL
Clone:	3G3
Isotype:	IgG2a
Cross-Reactivity:	Human
Characteristics:	Antibody Reactive Against Recombinant Protein.

Target Details

Target:	SLC3A1
Alternative Name:	SLC3A1 (SLC3A1 Products)
Background:	Full Gene Name: solute carrier family 3 (cystine, dibasic and neutral amino acid transporters, activator of cystine, dibasic and neutral amino acid transport), member 1 Synonyms: ATR1,CSNU1,D2H,FLJ34681,NBAT,RBAT
Gene ID:	6519

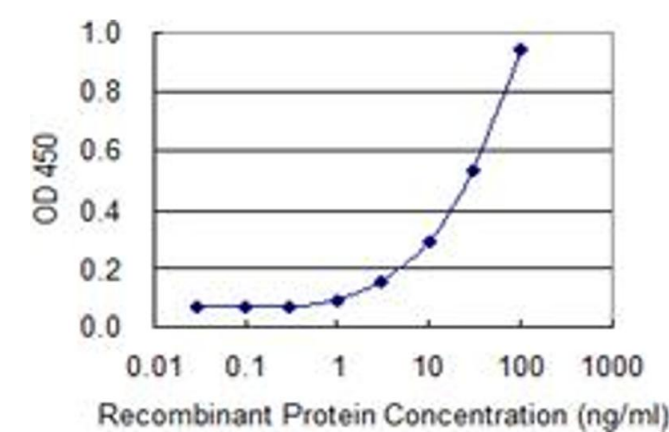
Application Details

Application Notes:	Optimal working dilution should be determined by the investigator.
Restrictions:	For Research Use only

Handling

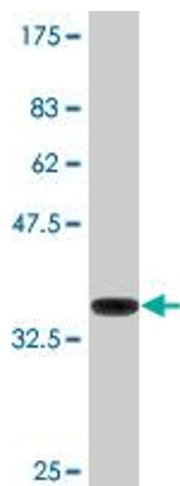
Buffer:	In 1x PBS, pH 7.4
Handling Advice:	Aliquot to avoid repeated freezing and thawing.
Storage:	-20 °C
Storage Comment:	Store at -20°C or lower. Aliquot to avoid repeated freezing and thawing.

Images



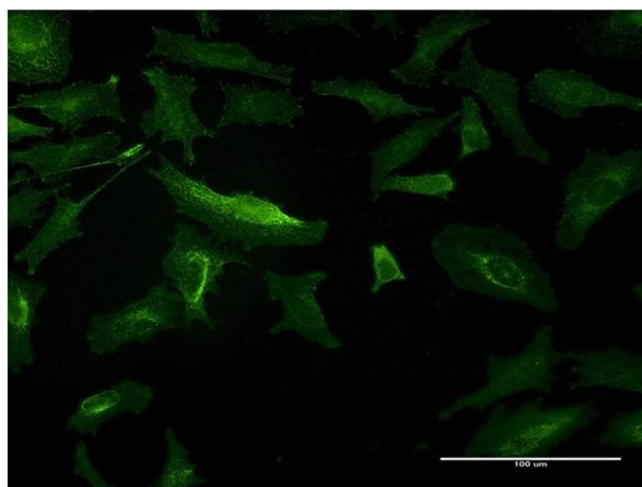
ELISA

Image 1. Detection limit for recombinant GST tagged SLC3A1 is 0.3 ng/ml as a capture antibody.



Western Blotting

Image 2. Western Blot detection against Immunogen (37.73 KDa) .



Immunofluorescence

Image 3. Immunofluorescence of monoclonal antibody to SLC3A1 on HeLa cell. [antibody concentration 10 ug/ml]