

Datasheet for ABIN520243
anti-SLC5A2 antibody (AA 228-277)

3 Images

[Go to Product page](#)

Overview

Quantity:	100 µg
Target:	SLC5A2
Binding Specificity:	AA 228-277
Reactivity:	Human
Host:	Mouse
Clonality:	Monoclonal
Conjugate:	This SLC5A2 antibody is un-conjugated
Application:	ELISA, Western Blotting (WB)

Product Details

Purpose:	Mouse monoclonal antibody raised against a partial recombinant SLC5A2.
Immunogen:	SLC5A2 (NP_003032.1, 228 a.a. ~ 277 a.a) partial recombinant protein with GST tag. MW of the GST tag alone is 26 KDa.
Sequence:	GLFDKYLGAATSLTVSEDPVGNISFCYRPRPDSYHLLRHPVTGDLWP
Clone:	3G8
Isotype:	IgG2a
Cross-Reactivity:	Human
Characteristics:	Antibody Reactive Against Recombinant Protein.

Target Details

Target:	SLC5A2
Alternative Name:	SLC5A2 (SLC5A2 Products)
Background:	Full Gene Name: solute carrier family 5 (sodium/glucose cotransporter), member 2 Synonyms: SGLT2
Gene ID:	6524
NCBI Accession:	NM_003041

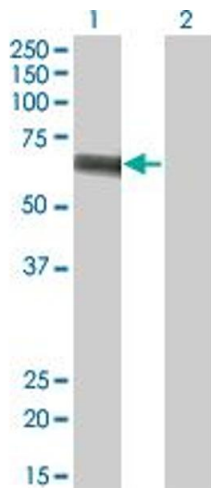
Application Details

Application Notes:	Optimal working dilution should be determined by the investigator.
Restrictions:	For Research Use only

Handling

Buffer:	In 1x PBS, pH 7.4
Handling Advice:	Aliquot to avoid repeated freezing and thawing.
Storage:	-20 °C
Storage Comment:	Store at -20°C or lower. Aliquot to avoid repeated freezing and thawing.

Images

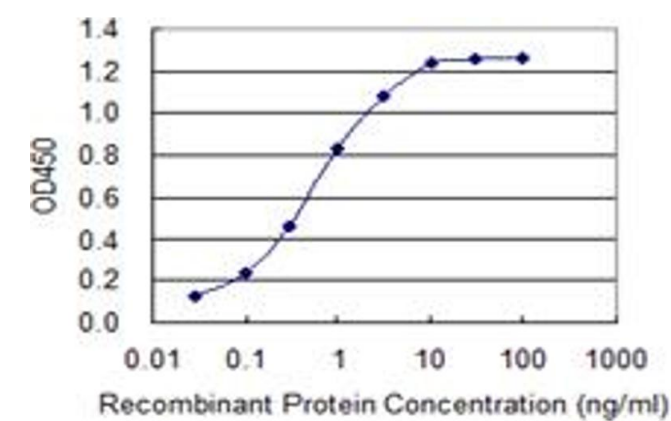


Western Blotting

Image 1. Western Blot analysis of SLC5A2 expression in transfected 293T cell line by SLC5A2 monoclonal antibody (M01), clone 3G8.

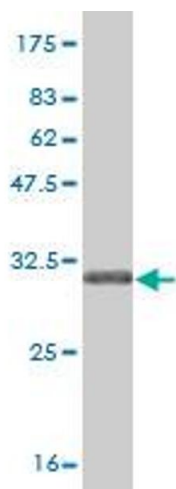
Lane 1: SLC5A2 transfected lysate(72.9 kDa).

Lane 2: Non-transfected lysate.



ELISA

Image 2. Detection limit for recombinant GST tagged SLC5A2 is 0.03 ng/ml as a capture antibody.



Western Blotting

Image 3. Western Blot detection against Immunogen (31.24 kDa) .