



Datasheet for ABIN520248  
**anti-SLC6A4 antibody (AA 1-630)**



[Go to Product page](#)

2 Images

Overview

Quantity:	100 µg
Target:	SLC6A4
Binding Specificity:	AA 1-630
Reactivity:	Human
Host:	Rabbit
Clonality:	Polyclonal
Conjugate:	This SLC6A4 antibody is un-conjugated
Application:	Western Blotting (WB)

Product Details

Purpose:	Rabbit polyclonal antibody raised against a full-length human SLC6A4 protein.
Immunogen:	SLC6A4 (AAH69484.1, 1 a.a. ~ 630 a.a) full-length human protein.
Sequence:	METTPLNSQK QLSACEDGED CQENGLVQKV VPTPGDKVES GQISNGYS AV PSPGAGDDTR HSIPATTTTL VAEHQGERE TWGKKVDFLL SVIGYAVDLG NVWRFPYICY QNGGGAFLLP YTIMAIFGGI PLFYMELALG QYHRNGCISI WRKICPIFKG IGYAICIAF YIASYYNTIM AWALYYLISS FTDQLPWTSC KNSWNTGNCT NYFSEDNITW TLHSTSPAEE FYTRHVLQIH RSKGLQDLGG ISWQLALCIM LIFTVIYFSI WKGVKTSQKV VVWTATFPYI ILSVLLVRGA TLPGAWRGVL FYLKPNWQKL LETGWWIDAA AQIFFSLGPG FGVLLAFASY NKFNNNCYQD ALVTSVNCM TSFVSGFVIF TVLGYMAEMR NEDVSEVAKD AGPSLLFITY AEAIANMPAS TFFAIIFFLM LITLGLDSTF AGLEGVITAV LDEFPHVWAK RRERFVLAVV ITCFFGSLVT LTFGGAYVVK LLEEYATGPA VLTVALIEAV AVSWFYGITQ FCRDVKEMLG FSPGWFWRIC WVAISPLFLL FIICSFLMSP PQLRLFQYNY PYWSIILGYC IGTSSFICIP TYIAYRLIIT PGTFKERIHK SITPETPEI

## Product Details

---

PCGDIRLNAV

Cross-Reactivity: Human, Mouse

Characteristics: Antibody reactive against mammalian transfected lysate.

## Target Details

---

Target: SLC6A4

Alternative Name: SLC6A4 ([SLC6A4 Products](#))

Background: Full Gene Name: solute carrier family 6 (neurotransmitter transporter, serotonin), member 4  
Synonyms: 5-HTT,5HTT,HTT,OCD1,SERT,hSERT

Gene ID: 6532

NCBI Accession: [NM\\_001045](#)

## Application Details

---

Application Notes: Optimal working dilution should be determined by the investigator.

Restrictions: For Research Use only

## Handling

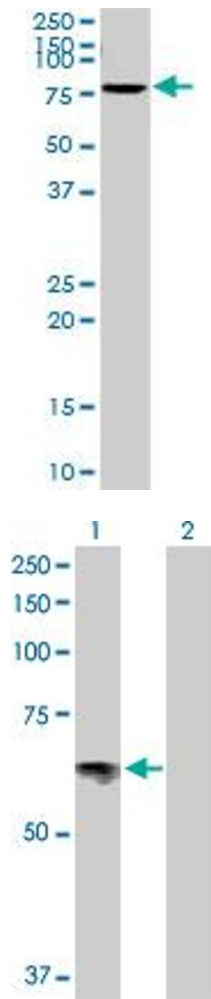
---

Buffer: In 1x PBS, pH 7.4

Handling Advice: Aliquot to avoid repeated freezing and thawing.

Storage: -20 °C

Storage Comment: Store at -20°C or lower. Aliquot to avoid repeated freezing and thawing.



#### Western Blotting

**Image 1.** SLC6A4 MaxPab rabbit polyclonal antibody. Western Blot analysis of SLC6A4 expression in mouse lung.

#### Western Blotting

**Image 2.** Western Blot analysis of SLC6A4 expression in transfected 293T cell line by SLC6A4 MaxPab polyclonal antibody.

Lane 1: SLC6A4 transfected lysate(70.30 KDa).

Lane 2: Non-transfected lysate.