

Datasheet for ABIN520250
anti-SLC6A11 antibody (AA 164-225)

2 Images

[Go to Product page](#)

Overview

Quantity:	100 µg
Target:	SLC6A11
Binding Specificity:	AA 164-225
Reactivity:	Human
Host:	Mouse
Clonality:	Monoclonal
Conjugate:	This SLC6A11 antibody is un-conjugated
Application:	Western Blotting (WB), ELISA

Product Details

Purpose:	Mouse monoclonal antibody raised against a partial recombinant SLC6A11.
Immunogen:	SLC6A11 (NP_055044.1, 164 a.a. ~ 225 a.a) partial recombinant protein with GST tag. MW of the GST tag alone is 26 KDa.
Sequence:	TELPWATCGH EWNTENCVEF QKLNVSNYSH VSLQNATSPV MEFWEHRVLA ISDGIEHIGH LR
Clone:	2C3
Isotype:	IgG2a
Cross-Reactivity:	Human
Characteristics:	Antibody Reactive Against Recombinant Protein.

Target Details

Target:	SLC6A11
Alternative Name:	SLC6A11 (SLC6A11 Products)
Background:	Full Gene Name: solute carrier family 6 (neurotransmitter transporter, GABA), member 11 Synonyms: GAT-3,GAT3
Gene ID:	6538
NCBI Accession:	NM_014229

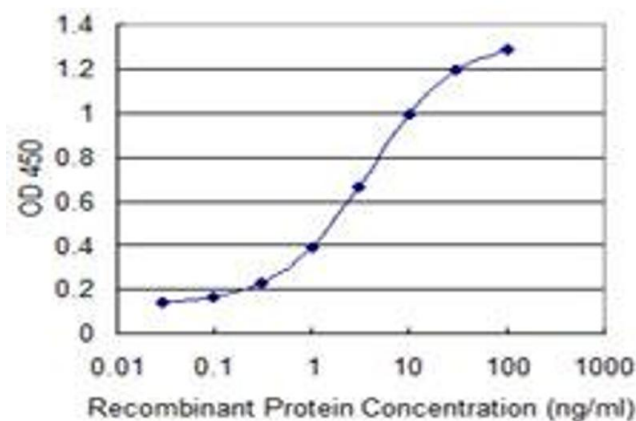
Application Details

Application Notes:	Optimal working dilution should be determined by the investigator.
Restrictions:	For Research Use only

Handling

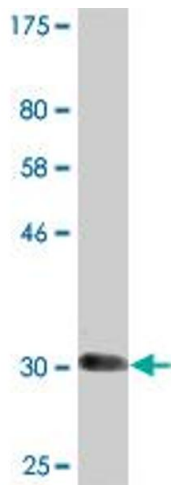
Buffer:	In 1x PBS, pH 7.4
Handling Advice:	Aliquot to avoid repeated freezing and thawing.
Storage:	-20 °C
Storage Comment:	Store at -20°C or lower. Aliquot to avoid repeated freezing and thawing.

Images



ELISA

Image 1. Detection limit for recombinant GST tagged SLC6A11 is 0.1 ng/ml as a capture antibody.



Western Blotting

Image 2. Western Blot detection against Immunogen (32.56 kDa) .