

Datasheet for ABIN520254  
**anti-SLC11A1 antibody (AA 1-178)**[Go to Product page](#)

## 1 Image

## Overview

Quantity:	50 µg
Target:	SLC11A1
Binding Specificity:	AA 1-178
Reactivity:	Human
Host:	Mouse
Clonality:	Polyclonal
Conjugate:	This SLC11A1 antibody is un-conjugated
Application:	Western Blotting (WB)

## Product Details

Purpose:	Mouse polyclonal antibody raised against a full-length human SLC11A1 protein.
Immunogen:	SLC11A1 (AAH41787.1, 1 a.a. ~ 178 a.a) full-length human protein.
Sequence:	MTGDKGPQRL SGSSYGSISS PTSPTSPGPQ QAPPRETYLR NIESDLQAGA VAGFKLLWVL LWATVLGLLC QRLAARLGVV TGKDLGEVCH LYYPKVPRTV LWLTIELAIV GSDMQEVIGT AIAFNLLSAG RYHPSVPQLF RPGREQLLLL PPLTSPSQSL FYPAVPSEAG LLPCFPPEM
Cross-Reactivity:	Human
Characteristics:	Antibody reactive against mammalian transfected lysate.

## Target Details

Target:	SLC11A1
---------	---------

Target Details

Alternative Name:	SLC11A1 ( <a href="#">SLC11A1 Products</a> )
Background:	Full Gene Name: solute carrier family 11 (proton-coupled divalent metal ion transporters), member 1 Synonyms: LSH,NRAMP,NRAMP1
Gene ID:	6556
Pathways:	<a href="#">Transition Metal Ion Homeostasis</a> , <a href="#">Production of Molecular Mediator of Immune Response</a> , <a href="#">Protein targeting to Nucleus</a>

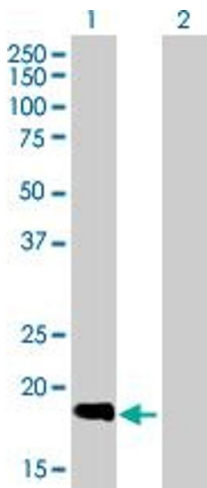
Application Details

Application Notes:	Optimal working dilution should be determined by the investigator.
Restrictions:	For Research Use only

Handling

Buffer:	In 1x PBS, pH 7.4
Handling Advice:	Aliquot to avoid repeated freezing and thawing.
Storage:	-20 °C
Storage Comment:	Store at -20°C or lower. Aliquot to avoid repeated freezing and thawing.

Images



Western Blotting

**Image 1.** Western Blot analysis of SLC11A1 expression in transfected 293T cell line by SLC11A1 MaxPab polyclonal antibody.

Lane 1: SLC11A1 transfected lysate(19.58 KDa).  
Lane 2: Non-transfected lysate.