



Datasheet for ABIN520256  
**anti-SLC14A1 antibody (AA 1-389)**



[Go to Product page](#)

1 Image

Overview

Quantity:	50 µg
Target:	SLC14A1
Binding Specificity:	AA 1-389
Reactivity:	Human
Host:	Mouse
Clonality:	Polyclonal
Conjugate:	This SLC14A1 antibody is un-conjugated
Application:	Western Blotting (WB)

Product Details

Purpose:	Mouse polyclonal antibody raised against a full-length human SLC14A1 protein.
Immunogen:	SLC14A1 (AAH50539, 1 a.a. ~ 389 a.a) full-length human protein.
Sequence:	MEDSPTMVRV DSPTMVRGEN QVSPCQGRRR FPKALGYVTG DMKELANQLK DKPVVLQFID WILRGISQVV FVNNPVSGIL ILVGLLVQNP WWALTGWLGT VVSTLMALLL SQDRSLIASG LYGYNATLVG VLMAVFSDKG DYFWWLLLPV CAMSMTCPHF SSALNSVLSK WDLPVFTLPF NMALSMYLSA TGHYNPFFPA KLVIPITTAP NISWSDLSAL ELLKSIPVGV GQIYGCDNPW TGGIFLGAIL LSSPLMCLHA AIGSLLGIAA GLSLSAPFEN IYFGLWGFNS SLACIAMGGM FMALTWQTHL LALGCALFTA YLGVGMANFM AEVGLPACTW PFCLATLLFL IMTTKNSNIY KMPLSKVTYP EENRIFYLQA KKRMVESPL
Cross-Reactivity:	Human
Characteristics:	Antibody reactive against mammalian transfected lysate.

## Target Details

Target:	SLC14A1
Alternative Name:	SLC14A1 ( <a href="#">SLC14A1 Products</a> )
Background:	Full Gene Name: solute carrier family 14 (urea transporter), member 1 (Kidd blood group) Synonyms: FLJ33745,FLJ41687,HUT11,HsT1341,JK,RACH1,UT-B1,UT1,UTE
Gene ID:	6563

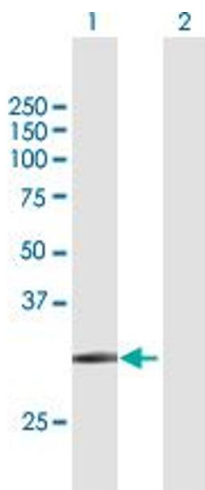
## Application Details

Application Notes:	Optimal working dilution should be determined by the investigator.
Restrictions:	For Research Use only

## Handling

Buffer:	In 1x PBS, pH 7.4
Handling Advice:	Aliquot to avoid repeated freezing and thawing.
Storage:	-20 °C
Storage Comment:	Store at -20°C or lower. Aliquot to avoid repeated freezing and thawing.

## Images



### Western Blotting

**Image 1.** Western Blot analysis of SLC14A1 expression in transfected 293T cell line by SLC14A1 MaxPab polyclonal antibody.

Lane 1: SLC14A1 transfected lysate(42.79 KDa).

Lane 2: Non-transfected lysate.