



Datasheet for ABIN520257
anti-SLC14A1 antibody (AA 1-389)



[Go to Product page](#)

3 Images

Overview

Quantity:	100 µL
Target:	SLC14A1
Binding Specificity:	AA 1-389
Reactivity:	Human
Host:	Rabbit
Clonality:	Polyclonal
Conjugate:	This SLC14A1 antibody is un-conjugated
Application:	Western Blotting (WB), Immunoprecipitation (IP)

Product Details

Purpose:	Rabbit polyclonal antibody raised against a full-length human SLC14A1 protein.
Immunogen:	SLC14A1 (AAH50539.1, 1 a.a. ~ 389 a.a) full-length human protein.
Sequence:	MEDSPTMVRV DSPTMVRGEN QVSPCQGRRC FPKALGYVTG DMKELANQLK DKPVVLQFID WILRGISQVV FVNNPVSGIL ILVGLLVQNP WWALTGWLGT VVSTLMALLL SQDRSLIASG LYGYNATLVG VLMAVFSDKG DYFWWLLLPV CAMSMTCPHF SSALNSVLSK WDLPVFTLPF NMALSMYLSA TGHYNPFFPA KLVIPITTAP NISWSDLSAL ELLKSIPVGV GQIYGCDNPW TGGIFLGAIL LSSPLMCLHA AIGSLLGIAA GLSLSAPFEN IYFGLWGFNS SLACIAMGGM FMALTWQTHL LALGCALFTA YLGVGMANFM AEVGLPACTW PFCLATLLFL IMTTKNSNIY KMPLSKVTYP EENRIFYLQA KKRMVESPL
Cross-Reactivity:	Human, Mouse
Characteristics:	Antibody reactive against mammalian transfected lysate.

Target Details

Target:	SLC14A1
Alternative Name:	SLC14A1 (SLC14A1 Products)
Background:	Full Gene Name: solute carrier family 14 (urea transporter), member 1 (Kidd blood group) Synonyms: FLJ33745,FLJ41687,HUT11,HsT1341,JK,RACH1,UT-B1,UT1,UTE
Gene ID:	6563

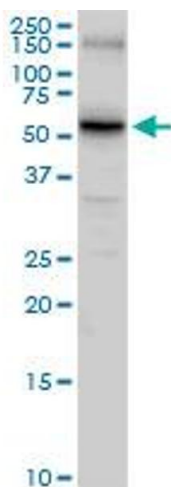
Application Details

Application Notes:	Optimal working dilution should be determined by the investigator.
Restrictions:	For Research Use only

Handling

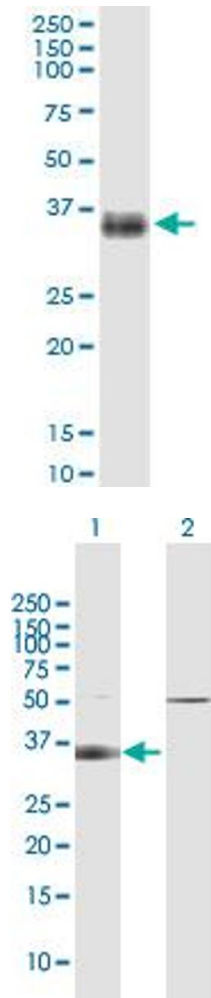
Format:	Liquid
Buffer:	No additive
Preservative:	Without preservative
Handling Advice:	Aliquot to avoid repeated freezing and thawing.
Storage:	-20 °C
Storage Comment:	Store at -20°C or lower. Aliquot to avoid repeated freezing and thawing.

Images



Western Blotting

Image 1. SLC14A1 MaxPab rabbit polyclonal antibody. Western Blot analysis of SLC14A1 expression in mouse liver.



Immunoprecipitation

Image 2. Immunoprecipitation of SLC14A1 transfected lysate using anti-SLC14A1 MaxPab rabbit polyclonal antibody and Protein A Magnetic Bead, and immunoblotted with SLC14A1 purified MaxPab mouse polyclonal antibody (B01P).

Western Blotting

Image 3. Western Blot analysis of SLC14A1 expression in transfected 293T cell line by SLC14A1 MaxPab polyclonal antibody.

Lane 1: SLC14A1 transfected lysate(42.5 KDa).

Lane 2: Non-transfected lysate.