



[Go to Product page](#)

Datasheet for ABIN520268
anti-SLC22A4 antibody (AA 43-141)

1 Image

Overview

| | |
|----------------------|--|
| Quantity: | 100 µg |
| Target: | SLC22A4 |
| Binding Specificity: | AA 43-141 |
| Reactivity: | Human |
| Host: | Mouse |
| Clonality: | Monoclonal |
| Conjugate: | This SLC22A4 antibody is un-conjugated |
| Application: | ELISA |

Product Details

| | |
|-------------------|---|
| Purpose: | Mouse monoclonal antibody raised against a partial recombinant SLC22A4. |
| Immunogen: | SLC22A4 (NP_003050, 43 a.a. ~ 141 a.a) partial recombinant protein with GST tag. MW of the GST tag alone is 26 KDa. |
| Sequence: | AGTPEHRCRV PDAANLSSAW RNNSVPLRLR DGREVPHSCS RYRLATIANF SALGLEPGRD VDLGQLEQES CLDGWEFSQD VYLSTVVTEW NLVCEDNWK |
| Clone: | 2D3 |
| Isotype: | IgG1 |
| Cross-Reactivity: | Human |
| Characteristics: | Antibody Reactive Against Recombinant Protein. |

Target Details

| | |
|-------------------|--|
| Target: | SLC22A4 |
| Alternative Name: | SLC22A4 (SLC22A4 Products) |
| Background: | Full Gene Name: solute carrier family 22 (organic cation/ergothioneine transporter), member 4 Synonyms: MGC34546,MGC40524,OCTN1 |
| Gene ID: | 6583 |
| NCBI Accession: | NM_003059 |

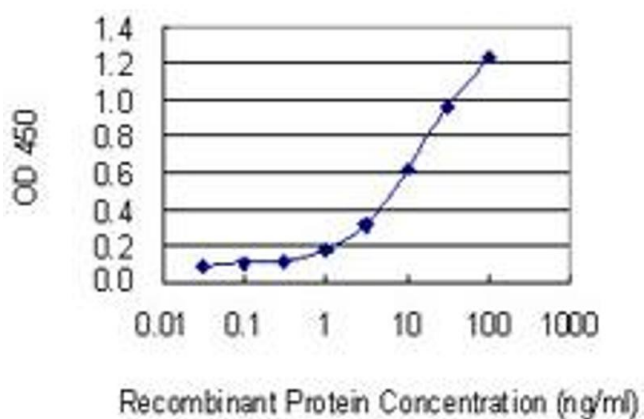
Application Details

| | |
|--------------------|--|
| Application Notes: | Optimal working dilution should be determined by the investigator. |
| Restrictions: | For Research Use only |

Handling

| | |
|------------------|--|
| Buffer: | In 1x PBS, pH 7.4 |
| Handling Advice: | Aliquot to avoid repeated freezing and thawing. |
| Storage: | -20 °C |
| Storage Comment: | Store at -20°C or lower. Aliquot to avoid repeated freezing and thawing. |

Images



ELISA

Image 1. Detection limit for recombinant GST tagged SLC22A4 is 0.3 ng/ml as a capture antibody.