

Datasheet for ABIN520282
anti-SMARCB1 antibody (AA 1-385)



[Go to Product page](#)

3 Images

Overview

Quantity:	100 µL
Target:	SMARCB1
Binding Specificity:	AA 1-385
Reactivity:	Human
Host:	Rabbit
Clonality:	Polyclonal
Conjugate:	This SMARCB1 antibody is un-conjugated
Application:	Western Blotting (WB), Immunoprecipitation (IP)

Product Details

Purpose:	Rabbit polyclonal antibody raised against a full-length human SMARCB1 protein.
Immunogen:	SMARCB1 (NP_003064.2, 1 a.a. ~ 385 a.a) full-length human protein.
Sequence:	<p>MMMMALSKTF GQKPVKFQLE DDGEFYMIGS EVGNYLRFMR GSLYKRYPSL WRRLATVEER KKIVASSHGK KTKPNTKDHG YTTLATSRTL LKASEVEEIL DGNDKEYKAV SISTEPPTYL REQKAKRNSQ WVPTLPNSSH HLDVPCSTT INRNRMRGRDK KRTFPLCFDD HDPVAVIHENA SQPEVLVPIR LDMEIDGQKL RDAFTWNMNE KLMTPEMFSE ILCDDLNLN LTFVPAIASA IRQQIESYPT DSILEDQSDQ RVIKLNHIV GNISLVDQFE WDMSEKENSF EKFALKCSE LGLGGEFVTT IAYSIRGQLS WHQKTYAFSE NPLPTVEIAI RNTGDADQWC PLLETLTDAE MEKKIRDQDR NTRRMRRLAN TAPAW</p>
Cross-Reactivity:	Human, Mouse
Characteristics:	Antibody reactive against mammalian transfected lysate.

Target Details

Target:	SMARCB1
Alternative Name:	SMARCB1 (SMARCB1 Products)
Background:	Full Gene Name: SWI/SNF related, matrix associated, actin dependent regulator of chromatin, subfamily b, member 1 Synonyms: BAF47,INI1,RDT,SNF5,SNF5L1,Sfh1p,Snr1,hSNFS
Gene ID:	6598
NCBI Accession:	NM_003073

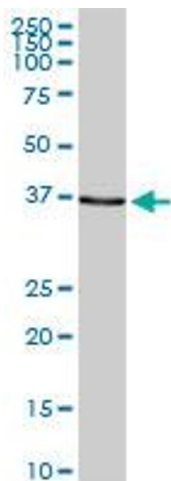
Application Details

Application Notes:	Optimal working dilution should be determined by the investigator.
Restrictions:	For Research Use only

Handling

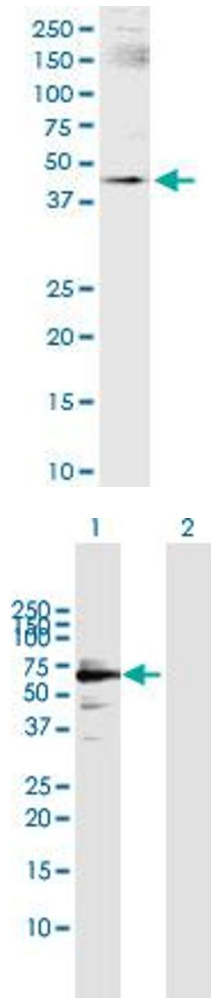
Format:	Liquid
Buffer:	No additive
Preservative:	Without preservative
Handling Advice:	Aliquot to avoid repeated freezing and thawing.
Storage:	-20 °C
Storage Comment:	Store at -20°C or lower. Aliquot to avoid repeated freezing and thawing.

Images



Western Blotting

Image 1. SMARCB1 MaxPab rabbit polyclonal antibody. Western Blot analysis of SMARCB1 expression in mouse intestine.



Immunoprecipitation

Image 2. Immunoprecipitation of SMARCB1 transfected lysate using anti-SMARCB1 MaxPab rabbit polyclonal antibody and Protein A Magnetic Bead, and immunoblotted with SMARCB1 purified MaxPab mouse polyclonal antibody (B01P).

Western Blotting

Image 3. Western Blot analysis of SMARCB1 expression in transfected 293T cell line by SMARCB1 MaxPab polyclonal antibody.

Lane 1: SMARCB1 transfected lysate(44.1 KDa).

Lane 2: Non-transfected lysate.