



Datasheet for ABIN520283
anti-SMARCB1 antibody (AA 1-385)



[Go to Product page](#)

4 Images

Overview

Quantity:	100 µg
Target:	SMARCB1
Binding Specificity:	AA 1-385
Reactivity:	Human
Host:	Rabbit
Clonality:	Polyclonal
Conjugate:	This SMARCB1 antibody is un-conjugated
Application:	Western Blotting (WB), Proximity Ligation Assay (PLA)

Product Details

Purpose:	Rabbit polyclonal antibody raised against a full-length human SMARCB1 protein.
Immunogen:	SMARCB1 (NP_003064.2, 1 a.a. ~ 385 a.a) full-length human protein.
Sequence:	MMMMALSKTF GQKPVKFKLE DDGEFYMIGS EVGNYLRFMR GSLYKRYPSL WRRLATVEER KKIVASSHGK KTKPNTKDHG YTTLATSRTL LKASEVEEIL DGNDKEYKAV SISTEPPTYL REQKAKRNSQ WVPTLPNSSH HLDVPCSTT INRNRMRGRDK KRTFPLCFDD HDPVAVIHENA SQPEVLVPIR LDMEIDGQKL RDAFTWNMNE KLMTPEMFSE ILCDDLNLN LTFVPAIASA IRQQIESYPT DSILEDQSDQ RVIKLNHIV GNISLVDQFE WDMSEKENSF EKFALKCSE LGLGGEFVTT IAYSIRGQLS WHQKTYAFSE NPLPTVEIAI RNTGDADQWC PLLETLTDAE MEKKIRDQDR NTRRMRRLAN TAPAW
Cross-Reactivity:	Human, Mouse
Characteristics:	Antibody reactive against mammalian transfected lysate.

Target Details

Target:	SMARCB1
Alternative Name:	SMARCB1 (SMARCB1 Products)
Background:	Full Gene Name: SWI/SNF related, matrix associated, actin dependent regulator of chromatin, subfamily b, member 1 Synonyms: BAF47,INI1,RDT,SNF5,SNF5L1,Sfh1p,Snr1,hSNFS
Gene ID:	6598
NCBI Accession:	NM_003073

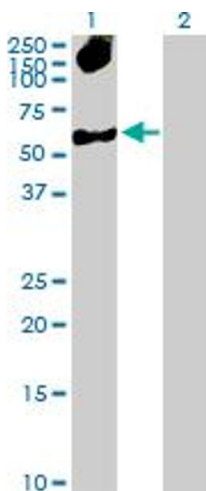
Application Details

Application Notes:	Optimal working dilution should be determined by the investigator.
Restrictions:	For Research Use only

Handling

Buffer:	In 1x PBS, pH 7.4
Handling Advice:	Aliquot to avoid repeated freezing and thawing.
Storage:	-20 °C
Storage Comment:	Store at -20°C or lower. Aliquot to avoid repeated freezing and thawing.

Images

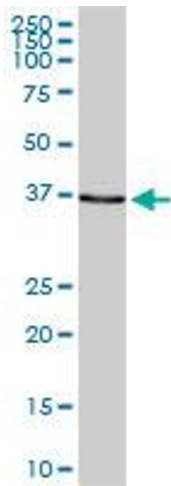


Western Blotting

Image 1. Western Blot analysis of SMARCB1 expression in transfected 293T cell line by SMARCB1 MaxPab polyclonal antibody.

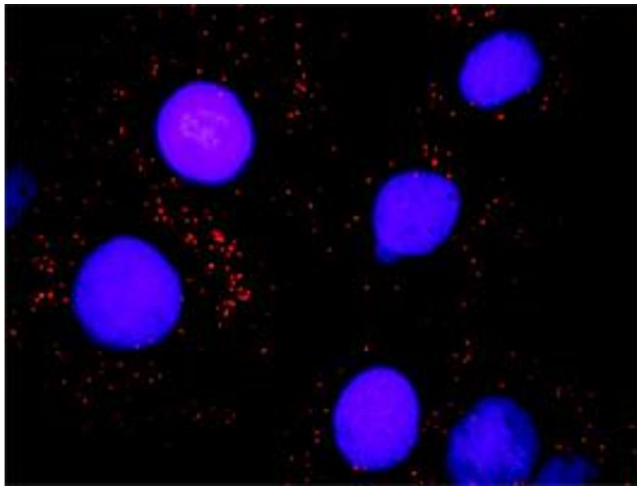
Lane 1: SMARCB1 transfected lysate(44.10 KDa).

Lane 2: Non-transfected lysate.



Western Blotting

Image 2. SMARCB1 MaxPab rabbit polyclonal antibody. Western Blot analysis of SMARCB1 expression in mouse intestine.



Proximity Ligation Assay

Image 3. Proximity Ligation Analysis of protein-protein interactions between SMARCB1 and BAZ1B. Huh7 cells were stained with anti-SMARCB1 rabbit purified polyclonal 1:1200 and anti-BAZ1B mouse monoclonal antibody 1:50. Each red dot represents the detection of protein-protein interaction complex, and nuclei were counterstained with DAPI (blue).

Please check the [product details page](#) for more images. Overall 4 images are available for ABIN520283.