

Datasheet for ABIN520286
anti-SMARCB1 antibody (AA 81-180)



[Go to Product page](#)

3 Images

Overview

Quantity:	100 µg
Target:	SMARCB1
Binding Specificity:	AA 81-180
Reactivity:	Human
Host:	Mouse
Clonality:	Monoclonal
Conjugate:	This SMARCB1 antibody is un-conjugated
Application:	Western Blotting (WB), ELISA

Product Details

Purpose:	Mouse monoclonal antibody raised against a partial recombinant SMARCB1.
Immunogen:	SMARCB1 (NP_003064, 81 a.a. ~ 180 a.a) partial recombinant protein with GST tag. MW of the GST tag alone is 26 KDa.
Sequence:	Y TTLATSVTL LKASEVEEIL DGNDEKYKAV SISTEPPTYL REQKAKRNSQ WVPTLPNSSH HLDVAVPCSTT INRNRMGRDK KRTFPLCFDD HDPVAVIHENA
Clone:	3C4
Isotype:	IgG2b
Cross-Reactivity:	Human, Rat
Characteristics:	Antibody Reactive Against Recombinant Protein.

Target Details

Target:	SMARCB1
Alternative Name:	SMARCB1 (SMARCB1 Products)
Background:	Full Gene Name: SWI/SNF related, matrix associated, actin dependent regulator of chromatin, subfamily b, member 1 Synonyms: BAF47,INI1,RDT,SNF5,SNF5L1,Sfh1p,Snr1,hSNFS
Gene ID:	6598
NCBI Accession:	NM_003073

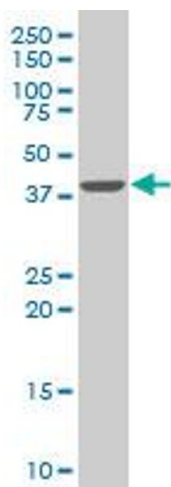
Application Details

Application Notes:	Optimal working dilution should be determined by the investigator.
Restrictions:	For Research Use only

Handling

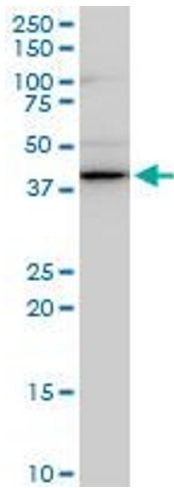
Buffer:	In 1x PBS, pH 7.4
Handling Advice:	Aliquot to avoid repeated freezing and thawing.
Storage:	-20 °C
Storage Comment:	Store at -20°C or lower. Aliquot to avoid repeated freezing and thawing.

Images



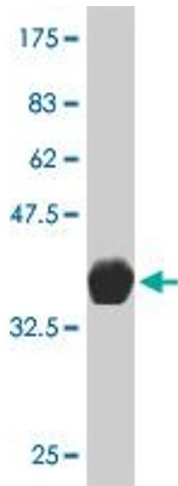
Western Blotting

Image 1. SMARCB1 monoclonal antibody (M03), clone 3C4 Western Blot analysis of SMARCB1 expression in HeLa S3 NE .



Western Blotting

Image 2. SMARCB1 monoclonal antibody (M03), clone 3C4. Western Blot analysis of SMARCB1 expression in PC-12.



Western Blotting

Image 3. Western Blot detection against Immunogen (36.74 kDa).