



[Go to Product page](#)

Datasheet for ABIN520318
anti-SUMO3 antibody (AA 1-103)

3 Images

Overview

Quantity:	100 µg
Target:	SUMO3
Binding Specificity:	AA 1-103
Reactivity:	Human
Host:	Mouse
Clonality:	Monoclonal
Conjugate:	This SUMO3 antibody is un-conjugated
Application:	Western Blotting (WB), ELISA

Product Details

Purpose:	Mouse monoclonal antibody raised against a partial recombinant SUMO3.
Immunogen:	SUMO3 (NP_008867, 1 a.a. ~ 103 a.a) partial recombinant protein with GST tag. MW of the GST tag alone is 26 KDa.
Sequence:	MSEEKPKEGV KTENDHINLK VAGQDGSVVQ FKIKRHTPLS KLMKAYCERQ GLSMRQIRFR FDGQPINETD TPAQLEMEDE DTIDVFQQQT GGVPESSLAG HSF
Clone:	4G11
Isotype:	IgG2a
Cross-Reactivity:	Human
Characteristics:	Antibody Reactive Against Recombinant Protein.

Target Details

Target:	SUMO3
Alternative Name:	SUMO3 (SUMO3 Products)
Background:	Full Gene Name: SMT3 suppressor of mif two 3 homolog 3 (<i>S. cerevisiae</i>) Synonyms: SMT3A,SMT3H1,SUMO-3
Gene ID:	6612
NCBI Accession:	NM_006936

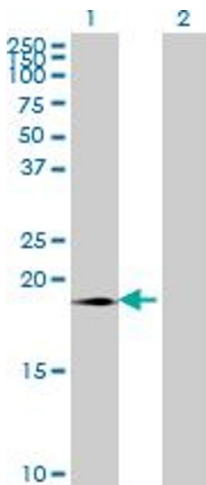
Application Details

Application Notes:	Optimal working dilution should be determined by the investigator.
Restrictions:	For Research Use only

Handling

Buffer:	In 1x PBS, pH 7.4
Handling Advice:	Aliquot to avoid repeated freezing and thawing.
Storage:	-20 °C
Storage Comment:	Store at -20°C or lower. Aliquot to avoid repeated freezing and thawing.

Images

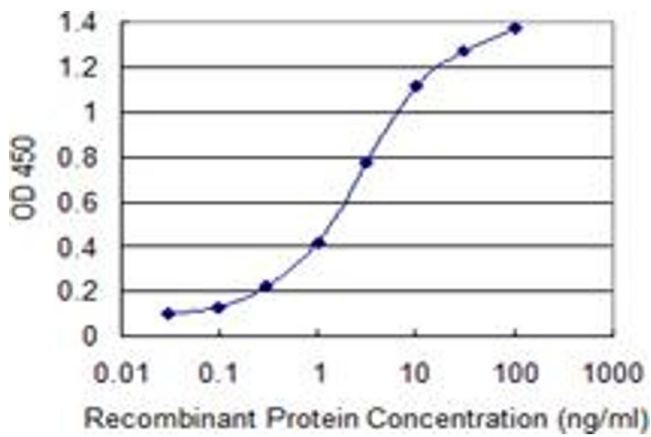


Western Blotting

Image 1. Western Blot analysis of SUMO3 expression in transfected 293T cell line by SUMO3 monoclonal antibody (M08), clone 4G11.

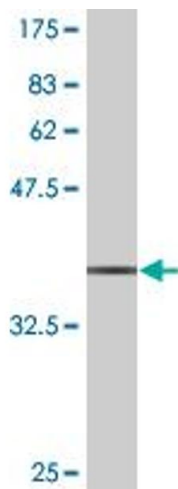
Lane 1: SUMO3 transfected lysate(11.6 kDa).

Lane 2: Non-transfected lysate.



ELISA

Image 2. Detection limit for recombinant GST tagged SUMO3 is 0.03 ng/ml as a capture antibody.



Western Blotting

Image 3. Western Blot detection against Immunogen (36.96 kDa).