



[Go to Product page](#)

Datasheet for ABIN520323

anti-SNAIL antibody (AA 1-264)

3 Images

Overview

Quantity:	50 µg
Target:	SNAIL (SNAI1)
Binding Specificity:	AA 1-264
Reactivity:	Human
Host:	Mouse
Clonality:	Polyclonal
Conjugate:	This SNAIL antibody is un-conjugated
Application:	Western Blotting (WB), Immunofluorescence (IF)

Product Details

Purpose:	Mouse polyclonal antibody raised against a full-length human SNAI1 protein.
Immunogen:	SNAI1 (NP_005976.2, 1 a.a. ~ 264 a.a) full-length human protein.
Sequence:	MPRSFLVRKP SDPNRKP NYS ELQDSNPEFT FQQPYDQ AHL LAAIPPPEIL NPTASLPMLI WDSVLAPQAQ PIAWASLR LQ ESPRVAELTS LSDEDSGKGS QPPSPSPAP SSFSSTSVSS LEAEYAAFP GLGQVPKQLA QLSEAKDLQA RKA FNCKYCN KEYLSLGALK MHIRSHTLPC VCGTCGKA FS RPWLLQGHVR THTGEKPFSC PHCSRAFADR SNLRAHLQTH SDVKKYQCQA CARTFSRMSL LHKHQESGCS GCPR
Cross-Reactivity:	Human
Characteristics:	Antibody reactive against mammalian transfected lysate.

Target Details

Target:	SNAIL (SNAI1)
Alternative Name:	SNAI1 (SNAI1 Products)
Background:	Full Gene Name: snail homolog 1 (Drosophila) Synonyms: SLUGH2,SNA,SNAH,dJ710H13.1
Gene ID:	6615
NCBI Accession:	NM_005985
Pathways:	Negative Regulation of intrinsic apoptotic Signaling

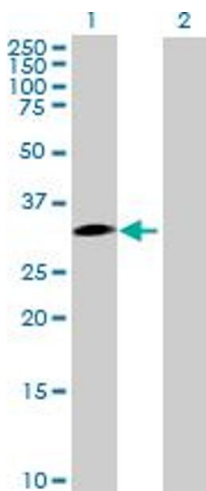
Application Details

Application Notes:	Optimal working dilution should be determined by the investigator.
Restrictions:	For Research Use only

Handling

Buffer:	In 1x PBS, pH 7.4
Handling Advice:	Aliquot to avoid repeated freezing and thawing.
Storage:	-20 °C
Storage Comment:	Store at -20°C or lower. Aliquot to avoid repeated freezing and thawing.

Images

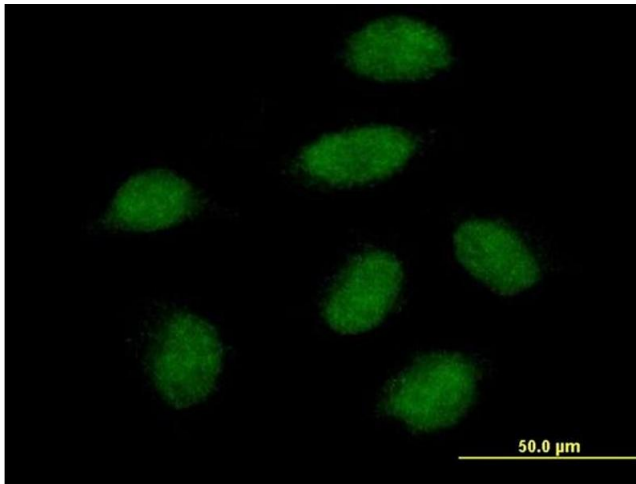


Western Blotting

Image 1. Western Blot analysis of SNAI1 expression in transfected 293T cell line by SNAI1 MaxPab polyclonal antibody.

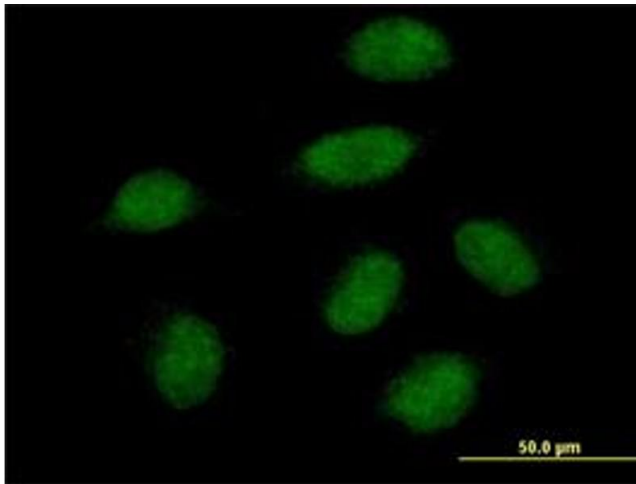
Lane 1: SNAI1 transfected lysate(29.04 kDa).

Lane 2: Non-transfected lysate.



Immunofluorescence

Image 2. Immunofluorescence of purified MaxPab antibody to SNAI1 on HeLa cell. [antibody concentration 10 μg/ml]



Immunofluorescence

Image 3. Immunofluorescence of purified MaxPab antibody to SNAI1 on HeLa cell. (antibody concentration 10 μg/mL)