

Datasheet for ABIN520340
anti-SNCG antibody (AA 1-127)[Go to Product page](#)

1 Image

Overview

Quantity:	50 µg
Target:	SNCG
Binding Specificity:	AA 1-127
Reactivity:	Human
Host:	Mouse
Clonality:	Polyclonal
Conjugate:	This SNCG antibody is un-conjugated
Application:	Western Blotting (WB)

Product Details

Purpose:	Mouse polyclonal antibody raised against a full-length human SNCG protein.
Immunogen:	SNCG (AAH14098.1, 1 a.a. ~ 127 a.a) full-length human protein.
Sequence:	MDVFKKGFSA AKEGVVGAVE KTKQGVTEAA EKTKEGVMYV GAKTKENVVQ SVTSVAEKTKEQANAVSEAV VSSVNTVATK TVEEAENIAV TSGVVRKEDL RPSAPQQEGE ASKEKEEVAEEAQSGGD
Cross-Reactivity:	Human
Characteristics:	Antibody reactive against mammalian transfected lysate.

Target Details

Target:	SNCG
---------	------

Target Details

Alternative Name:	SNCG (SNCG Products)
Background:	Full Gene Name: synuclein, gamma (breast cancer-specific protein 1) Synonyms: BCSG1,SR
Gene ID:	6623

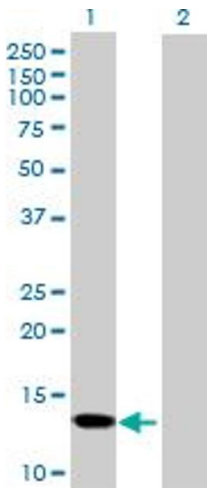
Application Details

Application Notes:	Optimal working dilution should be determined by the investigator.
Restrictions:	For Research Use only

Handling

Buffer:	In 1x PBS, pH 7.4
Handling Advice:	Aliquot to avoid repeated freezing and thawing.
Storage:	-20 °C
Storage Comment:	Store at -20°C or lower. Aliquot to avoid repeated freezing and thawing.

Images



Western Blotting

Image 1. Western Blot analysis of SNCG expression in transfected 293T cell line by SNCG MaxPab polyclonal antibody.

Lane 1: SNCG transfected lysate(13.97 KDa).

Lane 2: Non-transfected lysate.