

Datasheet for ABIN520376
anti-SOS1 antibody (AA 313-420)

4 Images

[Go to Product page](#)

Overview

Quantity:	100 µg
Target:	SOS1
Binding Specificity:	AA 313-420
Reactivity:	Human
Host:	Mouse
Clonality:	Monoclonal
Conjugate:	This SOS1 antibody is un-conjugated
Application:	ELISA, Proximity Ligation Assay (PLA)

Product Details

Purpose:	Mouse monoclonal antibody raised against a partial recombinant SOS1.
Immunogen:	SOS1 (NP_005624, 313 a.a. ~ 420 a.a) partial recombinant protein with GST tag. MW of the GST tag alone is 26 KDa.
Sequence:	SQLSKPGAAL YLQSIGEGFK EAVQYVLPRL LLAPVYHCLH YFELLKQLEE KSEDQEDKEC LKQAITALLN VQSGMEKICS KSLAKRRLSE SACRFYSQQM KGKQLAIK
Clone:	4C1
Isotype:	IgG2a
Cross-Reactivity:	Human
Characteristics:	Antibody Reactive Against Recombinant Protein.

Target Details

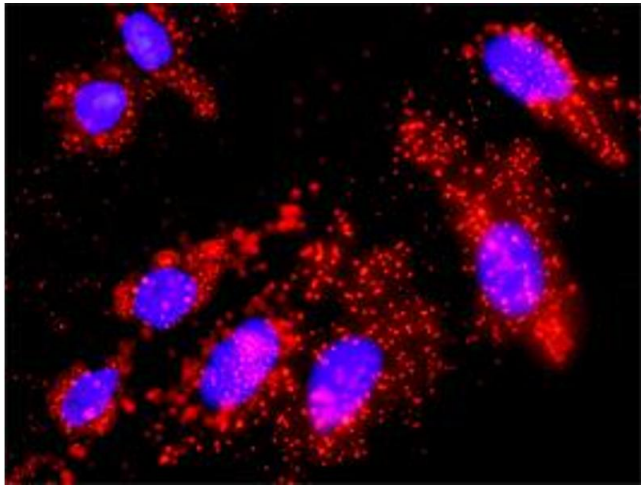
Target:	SOS1
Alternative Name:	SOS1 (SOS1 Products)
Target Type:	Viral Protein
Background:	Full Gene Name: son of sevenless homolog 1 (Drosophila) Synonyms: GF1,GGF1,GINGF,HGF,NS4
Gene ID:	6654
NCBI Accession:	NM_005633
Pathways:	RTK Signaling , TCR Signaling , Fc-epsilon Receptor Signaling Pathway , EGFR Signaling Pathway , Neurotrophin Signaling Pathway , Hepatitis C , Signaling Events mediated by VEGFR1 and VEGFR2 , Signaling of Hepatocyte Growth Factor Receptor , BCR Signaling

Application Details

Application Notes:	Optimal working dilution should be determined by the investigator.
Restrictions:	For Research Use only

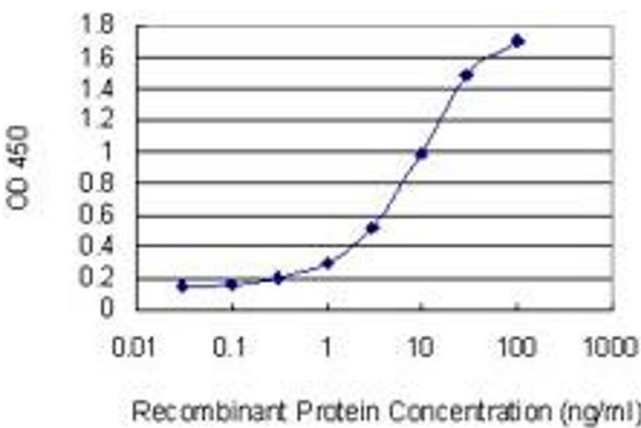
Handling

Buffer:	In 1x PBS, pH 7.4
Handling Advice:	Aliquot to avoid repeated freezing and thawing.
Storage:	-20 °C
Storage Comment:	Store at -20°C or lower. Aliquot to avoid repeated freezing and thawing.



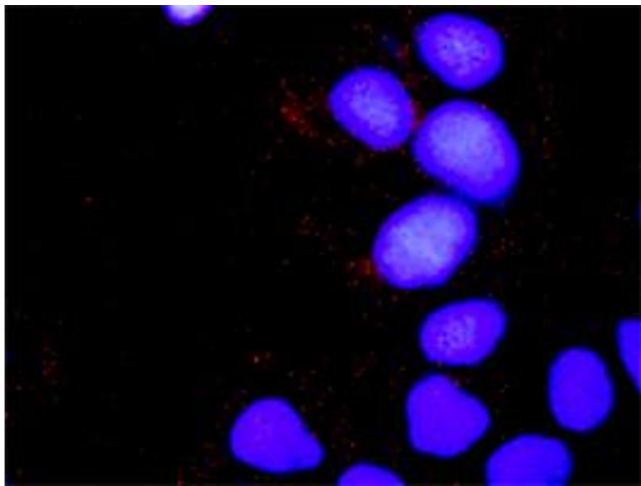
Proximity Ligation Assay

Image 1. Proximity Ligation Analysis of protein-protein interactions between FGFR1 and SOS1. HeLa cells were stained with anti-FGFR1 rabbit purified polyclonal 1:1200 and anti-SOS1 mouse monoclonal antibody 1:50. Each red dot represents the detection of protein-protein interaction complex, and nuclei were counterstained with DAPI (blue).



ELISA

Image 2. Detection limit for recombinant GST tagged SOS1 is 0.1 ng/ml as a capture antibody.



Proximity Ligation Assay

Image 3. Proximity Ligation Analysis of protein-protein interactions between CRKL and SOS1. Huh7 cells were stained with anti-CRKL rabbit purified polyclonal 1:1200 and anti-SOS1 mouse monoclonal antibody 1:50. Each red dot represents the detection of protein-protein interaction complex, and nuclei were counterstained with DAPI (blue).

Please check the [product details page](#) for more images. Overall 4 images are available for ABIN520376.