



[Go to Product page](#)

Datasheet for ABIN520402
anti-Sp2 antibody (AA 1-249)

1 Image

Overview

Quantity:	50 µg
Target:	Sp2
Binding Specificity:	AA 1-249
Reactivity:	Human
Host:	Mouse
Clonality:	Polyclonal
Conjugate:	This Sp2 antibody is un-conjugated
Application:	Western Blotting (WB)

Product Details

Purpose:	Mouse polyclonal antibody raised against a full-length human SP2 protein.
Immunogen:	SP2 (AAH05914.1, 1 a.a. ~ 249 a.a) full-length human protein.
Sequence:	MAATAAVSPS DYLQPAASTT QDSQPSPLAL LAATCSKIGP PAVEAAVTPP APPQPTPRKL VPIKPAPLPL SPGKNSFGIL SSKGNILQIQ GSQLSASYPG GQLVFAIQNP TMINKGTRSN ANIYQAVPQ IQASNSQTIQ VQPNTLNQIQ IIPGTNQAI TPSPSSHKPV PIKPAPIQKS STTTTPVQSG ANVVKLTGGG GNVTLTLPVN NLVNASDTGA PTQLLTASCQ TGMLNSTRMF LFLAFINVL
Cross-Reactivity:	Human
Characteristics:	Antibody reactive against mammalian transfected lysate.

Target Details

Target:	Sp2
Alternative Name:	SP2 (Sp2 Products)
Background:	Full Gene Name: Sp2 transcription factor Synonyms:
Gene ID:	6668

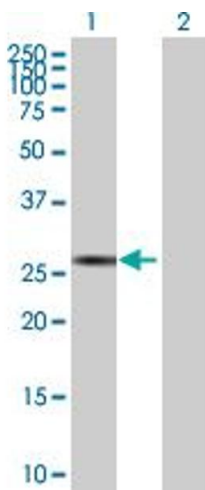
Application Details

Application Notes:	Optimal working dilution should be determined by the investigator.
Restrictions:	For Research Use only

Handling

Buffer:	In 1x PBS, pH 7.4
Handling Advice:	Aliquot to avoid repeated freezing and thawing.
Storage:	-20 °C
Storage Comment:	Store at -20°C or lower. Aliquot to avoid repeated freezing and thawing.

Images



Western Blotting

Image 1. Western Blot analysis of SP2 expression in transfected 293T cell line by SP2 MaxPab polyclonal antibody.

Lane 1: SP2 transfected lysate(27.39 KDa).

Lane 2: Non-transfected lysate.