

## Datasheet for ABIN520463 anti-Src antibody (AA 1-90)



[Go to Product page](#)

### 4 Images

#### Overview

Quantity:	100 µg
Target:	Src
Binding Specificity:	AA 1-90
Reactivity:	Human
Host:	Mouse
Clonality:	Monoclonal
Conjugate:	This Src antibody is un-conjugated
Application:	Western Blotting (WB), ELISA, Immunofluorescence (IF), Immunohistochemistry (Paraffin-embedded Sections) (IHC (p)), Proximity Ligation Assay (PLA)

#### Product Details

Purpose:	Mouse monoclonal antibody raised against a partial recombinant SRC.
Immunogen:	SRC (AAH11566, 1 a.a. ~ 90 a.a) partial recombinant protein with GST tag. MW of the GST tag alone is 26 KDa.
Sequence:	MGSNKS PKD ASQRRRSLEP AENVHGAGGG AFPASQTPSK PASADGHRGP SAAFAPAAAE PKLFGGFNSS DTVTSPQRAG PLAGGVTTFV
Clone:	1B9
Isotype:	IgG2a
Cross-Reactivity:	Human
Characteristics:	Antibody Reactive Against Recombinant Protein.

## Target Details

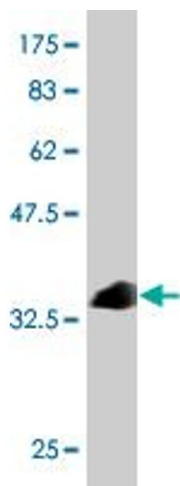
Target:	Src
Alternative Name:	SRC ( <a href="#">Src Products</a> )
Target Type:	Viral Protein
Background:	Full Gene Name: v-src sarcoma (Schmidt-Ruppin A-2) viral oncogene homolog (avian) Synonyms: ASV, SRC1, c-SRC, p60-Src
Gene ID:	6714
Pathways:	<a href="#">JAK-STAT Signaling</a> , <a href="#">Neurotrophin Signaling Pathway</a> , <a href="#">Intracellular Steroid Hormone Receptor Signaling Pathway</a> , <a href="#">Regulation of Intracellular Steroid Hormone Receptor Signaling</a> , <a href="#">Cellular Response to Molecule of Bacterial Origin</a> , <a href="#">Cell-Cell Junction Organization</a> , <a href="#">Regulation of Carbohydrate Metabolic Process</a> , <a href="#">Autophagy</a> , <a href="#">CXCR4-mediated Signaling Events</a> , <a href="#">Signaling Events mediated by VEGFR1 and VEGFR2</a> , <a href="#">Smooth Muscle Cell Migration</a> , <a href="#">Negative Regulation of intrinsic apoptotic Signaling</a> , <a href="#">Platelet-derived growth Factor Receptor Signaling</a> , <a href="#">Thromboxane A2 Receptor Signaling</a> , <a href="#">Signaling of Hepatocyte Growth Factor Receptor</a> , <a href="#">VEGF Signaling</a>

## Application Details

Application Notes:	Optimal working dilution should be determined by the investigator.
Restrictions:	For Research Use only

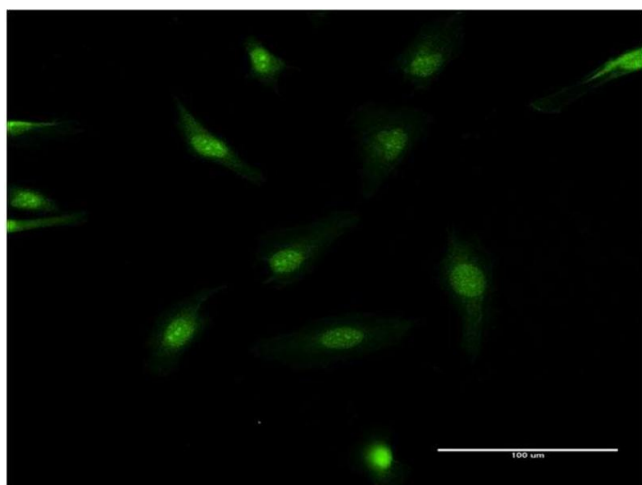
## Handling

Buffer:	In 1x PBS, pH 7.4
Handling Advice:	Aliquot to avoid repeated freezing and thawing.
Storage:	-20 °C
Storage Comment:	Store at -20°C or lower. Aliquot to avoid repeated freezing and thawing.



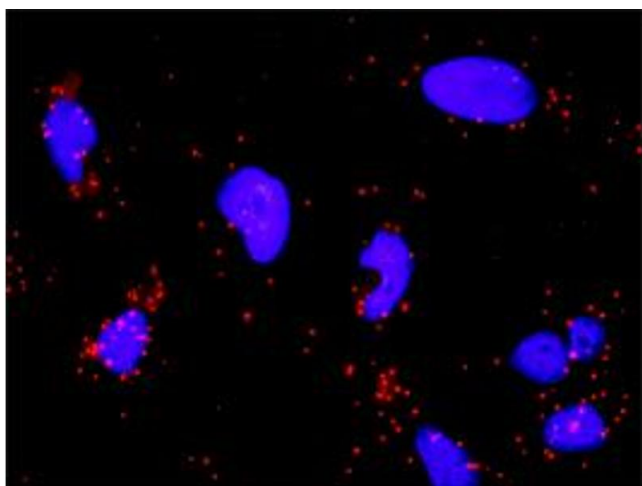
#### Western Blotting

**Image 1.** Western Blot detection against Immunogen (35.90 KDa) .



#### Immunofluorescence

**Image 2.** Immunofluorescence of monoclonal antibody to SRC on HeLa cell. [antibody concentration 10 ug/ml]



#### Proximity Ligation Assay

**Image 3.** Proximity Ligation Analysis of protein-protein interactions between PTK2 and SRC. HeLa cells were stained with anti-PTK2 rabbit purified polyclonal 1:1200 and anti-SRC mouse monoclonal antibody 1:50. Each red dot represents the detection of protein-protein interaction complex, and nuclei were counterstained with DAPI (blue).

Please check the [product details page](#) for more images. Overall 4 images are available for ABIN520463.