



[Go to Product page](#)

Datasheet for ABIN520473
anti-SRF antibody (AA 244-332)

1 Image

Overview

Quantity:	100 µg
Target:	SRF
Binding Specificity:	AA 244-332
Reactivity:	Human
Host:	Mouse
Clonality:	Monoclonal
Conjugate:	This SRF antibody is un-conjugated
Application:	Western Blotting (WB), ELISA

Product Details

Purpose:	Mouse monoclonal antibody raised against a full-length recombinant SRF.
Immunogen:	SRF (NP_003122, 244 a.a. ~ 332 a.a) full-length recombinant protein with GST tag. MW of the GST tag alone is 26 KDa.
Sequence:	TDLTYQVSES DSSGETKDTL KPAFTVTNLP GTTSTIQTAP STSTTMQVSS GPSFPITNYL APVSASVSPS AVSSANGTVL KSTGSGPV
Clone:	2C9
Isotype:	IgG2a
Cross-Reactivity:	Human
Characteristics:	Antibody Reactive Against Recombinant Protein.

Target Details

Target:	SRF
Alternative Name:	SRF (SRF Products)
Background:	Full Gene Name: serum response factor (c-fos serum response element-binding transcription factor) Synonyms: MCM1
Gene ID:	6722
NCBI Accession:	NM_003131

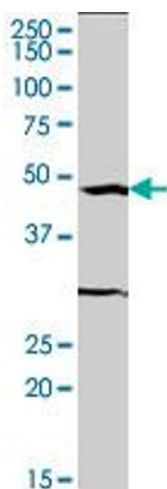
Application Details

Application Notes:	Optimal working dilution should be determined by the investigator.
Restrictions:	For Research Use only

Handling

Buffer:	In 1x PBS, pH 7.4
Handling Advice:	Aliquot to avoid repeated freezing and thawing.
Storage:	-20 °C
Storage Comment:	Store at -20°C or lower. Aliquot to avoid repeated freezing and thawing.

Images



Western Blotting

Image 1. SRF monoclonal antibody (M04), clone 2C9.
Western Blot analysis of SRF expression in HeLa S3 NE .