



[Go to Product page](#)

Datasheet for ABIN520515
anti-SSX2 antibody (AA 1-223)

1 Image

Overview

Quantity:	50 µg
Target:	SSX2
Binding Specificity:	AA 1-223
Reactivity:	Human
Host:	Mouse
Clonality:	Polyclonal
Conjugate:	This SSX2 antibody is un-conjugated
Application:	Western Blotting (WB)

Product Details

Purpose:	Mouse polyclonal antibody raised against a full-length human SSX2 protein.
Immunogen:	SSX2 (AAH02818, 1 a.a. ~ 223 a.a) full-length human protein.
Sequence:	MNGDDAFARR PTVGAQIPEK IQKAFDDIAK YFSKEEWEKM KASEKIFYVY MKRKYEAMTK LGFKATLPPF MCNKRAEDFQ GNDLDNDPNR GNQVERPQMT FGRLQGISPK IMPKKPAEEG NDSEEVPEAS GPQNDGKELC PPGKPTTSEK IHERSGNREA QEKEERRGTA HRWSSQNTHN IGRFSLSSTSM GAVHGTPKTI THNRDPKGGN MPGPTDCVRE NSW
Cross-Reactivity:	Human
Characteristics:	Antibody reactive against mammalian transfected lysate.

Target Details

Target:	SSX2
---------	------

Target Details

Alternative Name:	SSX2 (SSX2 Products)
Background:	Full Gene Name: synovial sarcoma, X breakpoint 2 Synonyms: HD21,HOM-MEL-40,MGC119055,MGC15364,MGC3884,SSX
Gene ID:	6757

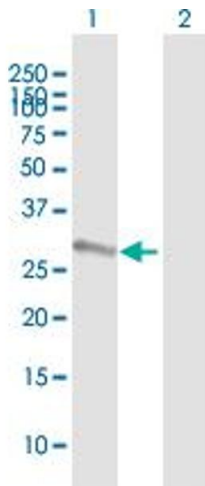
Application Details

Application Notes:	Optimal working dilution should be determined by the investigator.
Restrictions:	For Research Use only

Handling

Buffer:	In 1x PBS, pH 7.4
Handling Advice:	Aliquot to avoid repeated freezing and thawing.
Storage:	-20 °C
Storage Comment:	Store at -20°C or lower. Aliquot to avoid repeated freezing and thawing.

Images



Western Blotting

Image 1. Western Blot analysis of SSX2 expression in transfected 293T cell line by SSX2 MaxPab polyclonal antibody.

Lane 1: SSX2 transfected lysate(24.64 KDa).

Lane 2: Non-transfected lysate.