

Datasheet for ABIN520545
anti-STAT5B antibody (AA 1-390)



[Go to Product page](#)

2 Images

Overview

Quantity:	100 µg
Target:	STAT5B
Binding Specificity:	AA 1-390
Reactivity:	Human
Host:	Rabbit
Clonality:	Polyclonal
Conjugate:	This STAT5B antibody is un-conjugated
Application:	Western Blotting (WB), Proximity Ligation Assay (PLA)

Product Details

Purpose:	Rabbit polyclonal antibody raised against a full-length human STAT5B protein.
Immunogen:	STAT5B (AAH20868.1, 1 a.a. ~ 390 a.a) full-length human protein.
Sequence:	MAVWIIQAQQL QGEALHQMQA LYGQHFPIEV RHYLSQWIES QAWDSVDLDN PQENIKATQL LEGLVQELQK KAEHQVGEDG FLLKIKLGHY ATQLQNTYDR CPMELVRCIR HILYNEQRLV REANNGSSPA GSLADAMSQK HLQINQTFEE LRLVTQDTEN ELKKLQQTQE YFIIQYQESL RIQAQFGPLA QLSPQERLSR ETALQQKQVS LEAWLQREAQ TLQQYRVELA EKHQKTLQLL RKQQTIILDD ELIQWKRRQQ LAGNGGPPEG SLDVLQSWCE KLAELIHWQNR QQIRRAEHLK QQLPIPGPVE EMLAEVNATI TDIISALVTS TFIIEKQPPQ VLKTQTKFAA TVRLLVGGKL NVHMMNPPQVK ATIISEQQAQ SLLKNENTRK
Cross-Reactivity:	Human
Characteristics:	Antibody reactive against mammalian transfected lysate.

Target Details

Target:	STAT5B
Alternative Name:	STAT5B (STAT5B Products)
Background:	Full Gene Name: signal transducer and activator of transcription 5B Synonyms: STAT5
Gene ID:	6777
Pathways:	JAK-STAT Signaling , RTK Signaling , Response to Growth Hormone Stimulus , C21-Steroid Hormone Metabolic Process , Regulation of Leukocyte Mediated Immunity , Positive Regulation of Immune Effector Process , CXCR4-mediated Signaling Events , Activated T Cell Proliferation

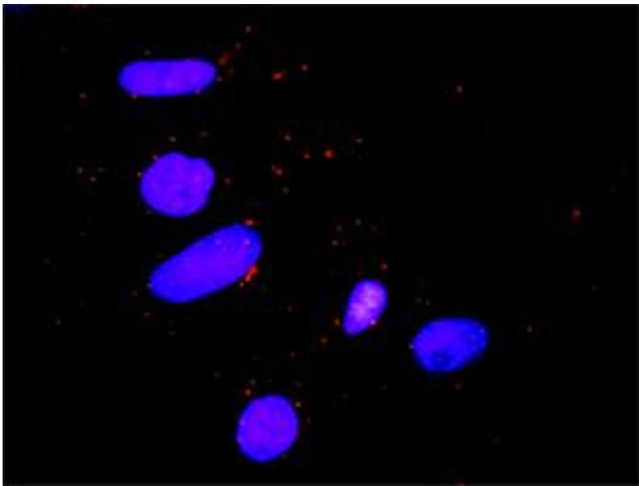
Application Details

Application Notes:	Optimal working dilution should be determined by the investigator.
Restrictions:	For Research Use only

Handling

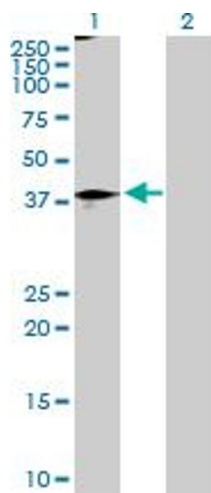
Buffer:	In 1x PBS, pH 7.4
Handling Advice:	Aliquot to avoid repeated freezing and thawing.
Storage:	-20 °C
Storage Comment:	Store at -20°C or lower. Aliquot to avoid repeated freezing and thawing.

Images



Proximity Ligation Assay

Image 1. Proximity Ligation Analysis of protein-protein interactions between STAT5B and CTLA4. HeLa cells were stained with anti-STAT5B rabbit purified polyclonal 1:1200 and anti-CTLA4 mouse monoclonal antibody 1:50. Each red dot represents the detection of protein-protein interaction complex, and nuclei were counterstained with DAPI (blue).



Western Blotting

Image 2. Western Blot analysis of STAT5B expression in transfected 293T cell line by STAT5B MaxPab polyclonal antibody.

Lane 1: STAT5B transfected lysate(44.90 KDa).

Lane 2: Non-transfected lysate.