



[Go to Product page](#)

Datasheet for ABIN520573  
**anti-STK3 antibody (AA 1-491)**

5 Images

Overview

Quantity:	100 µg
Target:	STK3
Binding Specificity:	AA 1-491
Reactivity:	Human
Host:	Rabbit
Clonality:	Polyclonal
Conjugate:	This STK3 antibody is un-conjugated
Application:	Western Blotting (WB), Immunofluorescence (IF), Proximity Ligation Assay (PLA)

Product Details

Purpose:	Rabbit polyclonal antibody raised against a full-length human STK3 protein.
Immunogen:	STK3 (NP_006272.2, 1 a.a. ~ 491 a.a) full-length human protein.
Sequence:	MEQPPAPKSK LKKLSEDSLTKQPEEVFDVL EKLGEESYGS VFKAIHKESG QVVAIKQVPV ESDLQEIIKE ISIMQQCDSP YVVKYYGSYF KNTDLWIVME YCGAGSVSDI IRLRNKTLIE DEIATILKST LKGLEYLHFM RKIHRDIKAG NILLNTEGHA KLADFGVAGQ LTDTMAKRNT VIGTPFWMAP EVIQEIGYNC VADIWSLGIT SIEMAEGKPP YADIHMPRAI FMIPTNPPPT FRKPELWSDD FTDFVKKCLV KNPEQRATAT QLLQHPIKN AKPVSILRDL ITEAMEIKAK RHEEQRELE EEEENSDEDE LDSHTMVKTS VESVGTMRAT STMSEGAQTM IEHNSTMLES DLGTMVINSE DEEEEDGTMK RNATSPQVQR PSFMDYFDKQ DFKNKSHENC NQNMHEPFPM SKNVFPDNWK VPQDGDGDFL KNLSLEELQM RLKALDPMME REIEELRQRY TAKRQPILDA MDAKKRRQQN F

## Product Details

---

Cross-Reactivity:	Human
Characteristics:	Antibody reactive against mammalian transfected lysate.

## Target Details

---

Target:	STK3
Alternative Name:	STK3 ( <a href="#">STK3 Products</a> )
Background:	Full Gene Name: serine/threonine kinase 3 (STE20 homolog, yeast) Synonyms: FLJ90748,KRS1,MST2
Gene ID:	6788
NCBI Accession:	<a href="#">NM_006281</a>
Pathways:	<a href="#">Tube Formation</a>

## Application Details

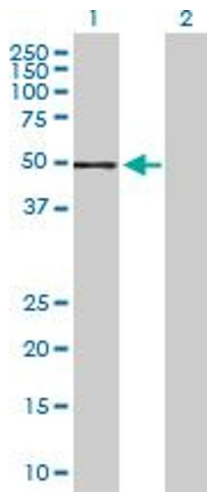
---

Application Notes:	Optimal working dilution should be determined by the investigator.
Restrictions:	For Research Use only

## Handling

---

Buffer:	In 1x PBS, pH 7.4
Handling Advice:	Aliquot to avoid repeated freezing and thawing.
Storage:	-20 °C
Storage Comment:	Store at -20°C or lower. Aliquot to avoid repeated freezing and thawing.

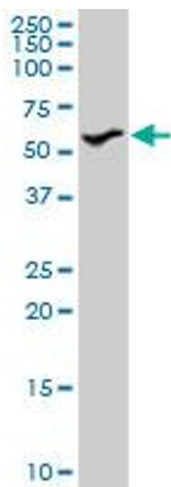


### Western Blotting

**Image 1.** Western Blot analysis of STK3 expression in transfected 293T cell line by STK3 MaxPab polyclonal antibody.

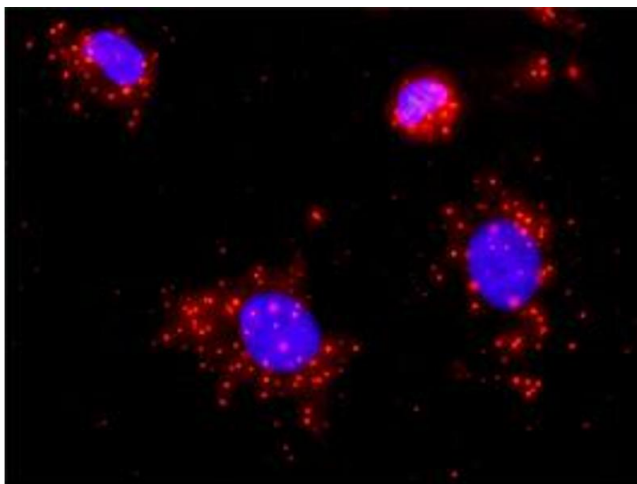
Lane 1: STK3 transfected lysate(56.30 KDa).

Lane 2: Non-transfected lysate.



### Western Blotting

**Image 2.** STK3 MaxPab rabbit polyclonal antibody. Western Blot analysis of STK3 expression in A-431.



### Proximity Ligation Assay

**Image 3.** Proximity Ligation Analysis of protein-protein interactions between STK3 and CASP3. HeLa cells were stained with anti-STK3 rabbit purified polyclonal 1:1200 and anti-CASP3 mouse monoclonal antibody 1:50. Each red dot represents the detection of protein-protein interaction complex, and nuclei were counterstained with DAPI (blue).

Please check the [product details page](#) for more images. Overall 5 images are available for ABIN520573.