



[Go to Product page](#)

Datasheet for ABIN520615  
**anti-SULT2B1 antibody (AA 1-90)**

3 Images

Overview

Quantity:	100 µg
Target:	SULT2B1
Binding Specificity:	AA 1-90
Reactivity:	Human
Host:	Mouse
Clonality:	Monoclonal
Conjugate:	This SULT2B1 antibody is un-conjugated
Application:	Western Blotting (WB), ELISA

Product Details

Purpose:	Mouse monoclonal antibody raised against a partial recombinant SULT2B1.
Immunogen:	SULT2B1 (NP_814444, 1 a.a. ~ 90 a.a) partial recombinant protein with GST tag. MW of the GST tag alone is 26 KDa.
Sequence:	MDGPAEPQIP GLWDTYEDDI SEISQKLPGE YFRYKGVFPF VGLYSLESLIS LAENTQDVRD DDIFIITYPK SGTWMIIEI CLILKEGDPS
Clone:	2E5
Isotype:	IgG1
Cross-Reactivity:	Human
Characteristics:	Antibody Reactive Against Recombinant Protein.

## Target Details

Target:	SULT2B1
Alternative Name:	SULT2B1 ( <a href="#">SULT2B1 Products</a> )
Background:	Full Gene Name: sulfotransferase family, cytosolic, 2B, member 1 Synonyms: HSST2
Gene ID:	6820
NCBI Accession:	<a href="#">NM_177973</a>
Pathways:	<a href="#">Steroid Hormone Biosynthesis</a>

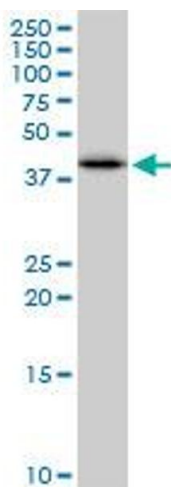
## Application Details

Application Notes:	Optimal working dilution should be determined by the investigator.
Restrictions:	For Research Use only

## Handling

Buffer:	In 1x PBS, pH 7.4
Handling Advice:	Aliquot to avoid repeated freezing and thawing.
Storage:	-20 °C
Storage Comment:	Store at -20°C or lower. Aliquot to avoid repeated freezing and thawing.

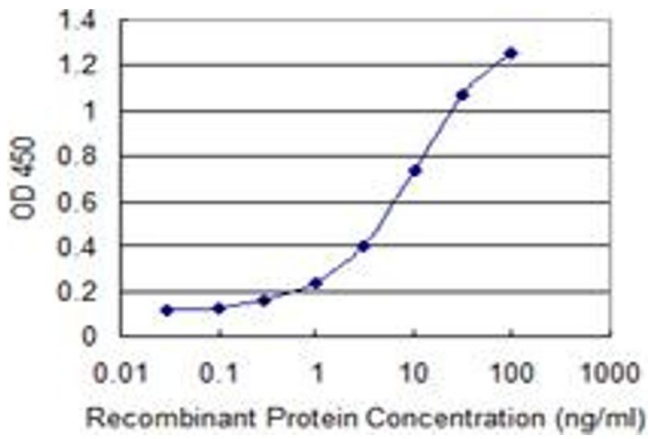
## Images



### Western Blotting

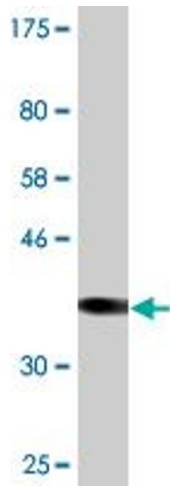
**Image 1.** SULT2B1 monoclonal antibody (M03), clone 2E5.

Western Blot analysis of SULT2B1 expression in MCF-7.



### ELISA

**Image 2.** Detection limit for recombinant GST tagged SULT2B1 is 0.1 ng/ml as a capture antibody.



### Western Blotting

**Image 3.** Western Blot detection against Immunogen (35.64 kDa).