



[Go to Product page](#)

Datasheet for ABIN520625
anti-SUPV3L1 antibody (AA 1-786)

5 Images

Overview

Quantity:	50 µg
Target:	SUPV3L1
Binding Specificity:	AA 1-786
Reactivity:	Human
Host:	Mouse
Clonality:	Polyclonal
Conjugate:	This SUPV3L1 antibody is un-conjugated
Application:	Western Blotting (WB)

Product Details

Purpose:	Mouse polyclonal antibody raised against a full-length human SUPV3L1 protein.
Immunogen:	SUPV3L1 (NP_003162.2, 1 a.a. ~ 786 a.a) full-length human protein.
Sequence:	MSFSRALLWA RLPAGRQAGH RAAICSALRP HFGPFPGLVQ QVSVLATASS SASGGSKIPN TSLFVPLTVK PQGPSADGDV GAELTRPLDK NEVKKVLDKF YKRKEIQKLG ADYGLDARLF HQAFISFRNY IMQSHSLDVD IHIVLNDICF GAAHADDLFP FFLRHAKQIF PVLDCDDLR KISDLRIPPW WYPDARAMQR KIIFHSGPTN SGKTYHAIQK YFSAKSGVYC GPLKLLAHEI FEKSNAAGVP CDLVTGEERV TVQPNGKQAS HVSCVEMCS VTPPYEVAVI DEIQMIRDPA RGWAWTRALL GLCAEEVHLC GEPAAIDLVM ELMYTTGEEV EVRDYKRLTP ISVLDHALES LDNLRPGDCI VCFSKNDIYS VSRQIEIRGL ESAVIYGLSLP PGTKLAQAKK FNDPNDPCKI LVATDAIGMG LNLSIRRIIF YSLIKPSINE KGERELEPIT TSQALQIAGR AGRFSSRFKE GEVTTMNHED LSKLKEILKR PVDPIRAAGL HPTAEQIEMF AYHLPDALS NLIDIFVDFS QVDGQYFVCN MDDFKFSAEL IQHIPLSLRV RYVFCTAPIN KKQPFVCSL LQFARQYSRN

Product Details

EPLTFAWLRR YIKWPLLPPK NIKDLMDLEA VHDVLDLYLW LSRYFMDMFP DASLIRDLQK
ELDGIIQDGV HNITKLIKMS ETHKLLNLEG FPSGSQSRLS GTLKSQARRT RGTKALGSKA
TEPPSPDAGE LSLASRLVQQ GLLTPDMLKQ LEKEWMTQQT EHNKEKTESG THPKGTRRKK
KEPDSD

Cross-Reactivity: Human, Mouse, Rat

Characteristics: Antibody reactive against mammalian transfected lysate.

Target Details

Target: SUPV3L1

Alternative Name: SUPV3L1 ([SUPV3L1 Products](#))

Background: Full Gene Name: suppressor of var1, 3-like 1 (S. cerevisiae)
Synonyms: SUV3

Gene ID: 6832

NCBI Accession: [NM_003171](#)

Application Details

Application Notes: Optimal working dilution should be determined by the investigator.

Restrictions: For Research Use only

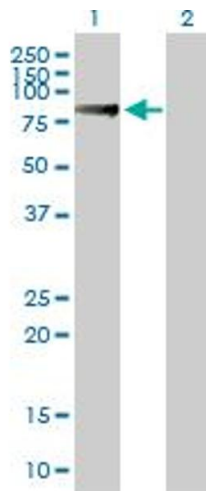
Handling

Buffer: In 1x PBS, pH 7.4

Handling Advice: Aliquot to avoid repeated freezing and thawing.

Storage: -20 °C

Storage Comment: Store at -20°C or lower. Aliquot to avoid repeated freezing and thawing.

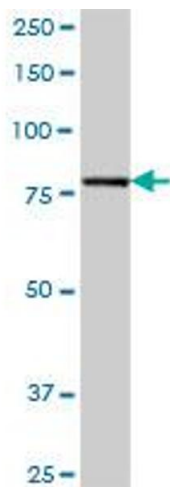


Western Blotting

Image 1. Western Blot analysis of SUPV3L1 expression in transfected 293T cell line by SUPV3L1 MaxPab polyclonal antibody.

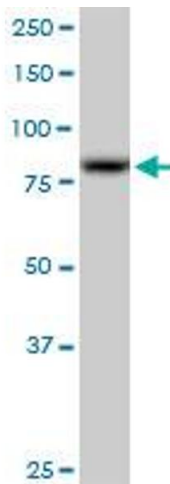
Lane 1: SUPV3L1 transfected lysate(86.46 KDa).

Lane 2: Non-transfected lysate.



Western Blotting

Image 2. SUPV3L1 MaxPab polyclonal antibody. Western Blot analysis of SUPV3L1 expression in human pancreas.



Viral Entry Inhibition

Image 3. SUPV3L1 MaxPab polyclonal antibody. Western Blot analysis of SUPV3L1 expression in A-431.

Please check the [product details page](#) for more images. Overall 5 images are available for ABIN520625.