



[Go to Product page](#)

Datasheet for ABIN520627
anti-ABCC8 antibody (AA 611-710)

2 Images

Overview

Quantity:	100 µg
Target:	ABCC8
Binding Specificity:	AA 611-710
Reactivity:	Human
Host:	Mouse
Clonality:	Monoclonal
Conjugate:	This ABCC8 antibody is un-conjugated
Application:	Western Blotting (WB), ELISA

Product Details

Purpose:	Mouse monoclonal antibody raised against a partial recombinant ABCC8.
Immunogen:	ABCC8 (NP_000343, 611 a.a. ~ 710 a.a) partial recombinant protein with GST tag. MW of the GST tag alone is 26 KDa.
Sequence:	SEFLSSAEIR EEQCAPHEPT PQGPASKYQA VPLRVVNRKR PAREDCRGLT GPLQSLVP DGDADNCCVQ IMGGYFTWTP DGIPTLSNIT IRIPRGQLTM
Clone:	3E1
Isotype:	IgG1
Cross-Reactivity:	Human
Characteristics:	Antibody Reactive Against Recombinant Protein.

Target Details

Target:	ABCC8
Alternative Name:	ABCC8 (ABCC8 Products)
Background:	Full Gene Name: ATP-binding cassette, sub-family C (CFTR/MRP), member 8 Synonyms: ABC36,HHF1,HI,HRINS,MRP8,PHHI,SUR,SUR1,TNDM2
Gene ID:	6833
NCBI Accession:	NM_000352
Pathways:	Negative Regulation of Hormone Secretion

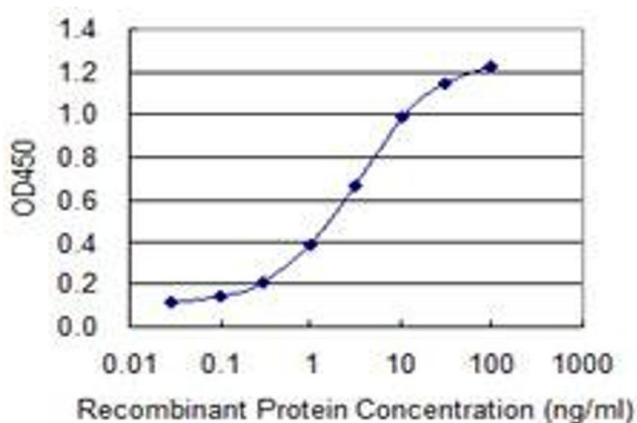
Application Details

Application Notes:	Optimal working dilution should be determined by the investigator.
Restrictions:	For Research Use only

Handling

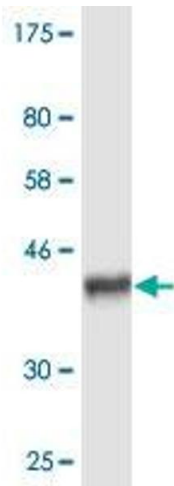
Buffer:	In 1x PBS, pH 7.4
Handling Advice:	Aliquot to avoid repeated freezing and thawing.
Storage:	-20 °C
Storage Comment:	Store at -20°C or lower. Aliquot to avoid repeated freezing and thawing.

Images



ELISA

Image 1. Detection limit for recombinant GST tagged ABCC8 is 0.03 ng/ml as a capture antibody.



Western Blotting

Image 2. Western Blot detection against Immunogen (36.74 KDa).