



[Go to Product page](#)

Datasheet for ABIN520628
anti-SURF1 antibody (AA 1-300)

1 Image

Overview

Quantity:	50 µL
Target:	SURF1
Binding Specificity:	AA 1-300
Reactivity:	Human
Host:	Mouse
Clonality:	Polyclonal
Conjugate:	This SURF1 antibody is un-conjugated
Application:	Western Blotting (WB)

Product Details

Purpose:	Mouse polyclonal antibody raised against a full-length human SURF1 protein.
Immunogen:	SURF1 (NP_003163.1, 1 a.a. ~ 300 a.a) full-length human protein.
Sequence:	MAVAALQLG LRAAGLGRAP ASAAWRSVLR VSPRPGVAWR PSRCGSSAAE ASATKAEDDS FLQWVLLLIP VTAFGLGTWQ VQRRKWKLNL IAELESRVLA EPVPLPADPM ELKNLEYRPV KVRGCFDHSK ELYMMPRTMV DPVREAREGG LISSSTQSGA YVTPFHCTD LGVTILVNRG FVPRKKVNPE TRQKGQIEGE VDLIGMVRLT ETRQPFVPEN NPERNHWHYR DLEAMARITG AEPIFIDANF QSTVPGGPIG GQTRVTLRNE HLQYIVTWYG LSAATSYLWF KKFLRGTPGV
Cross-Reactivity:	Human
Characteristics:	Antibody reactive against mammalian transfected lysate.

Target Details

Target:	SURF1
Alternative Name:	SURF1 (SURF1 Products)
Background:	Full Gene Name: surf1 Synonyms:
Gene ID:	6834
NCBI Accession:	NM_003172
Pathways:	Proton Transport , Ribonucleoside Biosynthetic Process

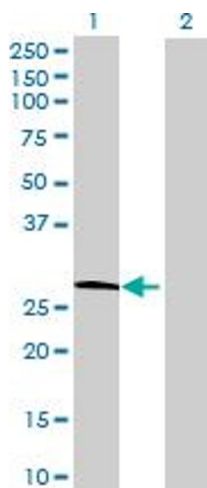
Application Details

Application Notes:	Optimal working dilution should be determined by the investigator.
Restrictions:	For Research Use only

Handling

Format:	Liquid
Buffer:	No additive
Preservative:	Without preservative
Handling Advice:	Aliquot to avoid repeated freezing and thawing.
Storage:	-20 °C
Storage Comment:	Store at -20°C or lower. Aliquot to avoid repeated freezing and thawing.

Images



Western Blotting

Image 1. Western Blot analysis of SURF1 expression in transfected 293T cell line by SURF1 MaxPab polyclonal antibody.

Lane1: SURF1 transfected lysate(33 kDa).

Lane2: Non-transfected lysate.