



[Go to Product page](#)

Datasheet for ABIN520635
anti-SYK antibody (AA 1-635)

3 Images

Overview

Quantity:	100 µg
Target:	SYK
Binding Specificity:	AA 1-635
Reactivity:	Human
Host:	Rabbit
Clonality:	Polyclonal
Conjugate:	This SYK antibody is un-conjugated
Application:	Western Blotting (WB), Proximity Ligation Assay (PLA)

Product Details

Purpose:	Rabbit polyclonal antibody raised against a full-length human SYK protein.
Immunogen:	SYK (NP_003168.2, 1 a.a. ~ 635 a.a) full-length human protein.
Sequence:	MASSGMADSA NHLPFFFGNI TREEAEDYLV QGGMSDGLYL LRQSRNYLGG FALSWAHGRK AHHYTIEREL NGTYAIAGGR THASPADLCH YHSQESDGLV CLLKKPFNRP QGVQPKTGPF EDLKENLIRE YVKQTWNLQG QALEQAIISQ KPQLEKLIAT TAHEKMPWFH GKISREESEQ IVLIGSKTNG KFLIRARDNN GSYALCLLHE GKVLYHRIDK DKTGKLSIPE GKKFDTLWQL VEHYSYKADG LLRVLTVPQC KIGTQGNVNF GGRPQLPGSH PATWSAGGII SRIKSYSFPK PGHRKSSPAQ GNRQESTVSF NPYEPELAPW AADKGPQREA LPMDETVYES PYADPEEIRP KEYVLDRLKLL TLEDKELGSG NFGTVKKGYY QMKKVKTVA VKILKNEAND PALKDELLAE ANVMQQLDNP YIVRMIGICE AESWMLVMEM AELGPLNKYL QQNRHVKDKN IIELVHQVSM GMKYLEESNF VHRDLAARNV LLVTQHYAKI SDFGLSKALR ADENYYKAQT HGKWPVKWYA PECINYYKFS SKSDVWSFGV LMWEAFSYGQ KPYRGMKGSE VTAMLEKGER MGCPAGCPRE

Product Details

MYDLMNLCWT YDVENRPGFA AVELRLRNYY YDVVN

Cross-Reactivity: Human

Characteristics: Antibody reactive against mammalian transfected lysate.

Target Details

Target: SYK

Alternative Name: SYK ([SYK Products](#))

Background: Full Gene Name: spleen tyrosine kinase
Synonyms: DKFZp313N1010,FLJ25043,FLJ37489

Gene ID: 6850

NCBI Accession: [NM_003177](#)

Pathways: [Fc-epsilon Receptor Signaling Pathway](#), [Regulation of Leukocyte Mediated Immunity](#), [Positive Regulation of Immune Effector Process](#), [Thromboxane A2 Receptor Signaling](#), [BCR Signaling](#)

Application Details

Application Notes: Optimal working dilution should be determined by the investigator.

Restrictions: For Research Use only

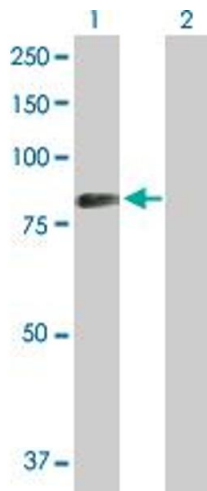
Handling

Buffer: In 1x PBS, pH 7.4

Handling Advice: Aliquot to avoid repeated freezing and thawing.

Storage: -20 °C

Storage Comment: Store at -20°C or lower. Aliquot to avoid repeated freezing and thawing.

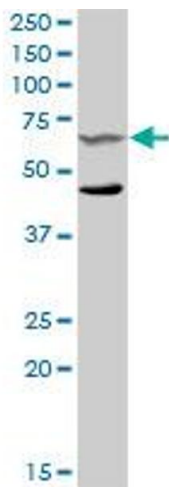


Western Blotting

Image 1. Western Blot analysis of SYK expression in transfected 293T cell line by SYK MaxPab polyclonal antibody.

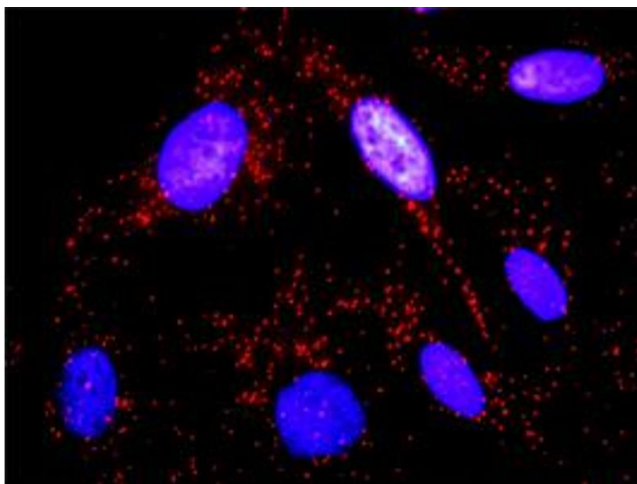
Lane 1: SYK transfected lysate(72.10 KDa).

Lane 2: Non-transfected lysate.



Western Blotting

Image 2. SYK MaxPab rabbit polyclonal antibody. Western Blot analysis of SYK expression in HeLa.



Proximity Ligation Assay

Image 3. Proximity Ligation Analysis of protein-protein interactions between SYK and CTTN. HeLa cells were stained with anti-SYK rabbit purified polyclonal 1:1200 and anti-CTTN mouse monoclonal antibody 1:50. Each red dot represents the detection of protein-protein interaction complex, and nuclei were counterstained with DAPI (blue).